

# JAZZAMATAZZ

## The Express Collection

---

Proudly made in Canada for over 30 years



2022

# JAZZAMATAZZ

The Express Collection

## Thankful to have been costuming Canadian Dancers for more than 30 years.

Over the past two seasons, we have all become masters of the pivot and discovered just how resilient we are. We have watched you care for your students remotely and in taped boxes on your studio floors. We applaud your dedication to your students and to your communities. We see you we see and your dedication. Together, the Canadian dance community is rising, healing and soaring and we are grateful to be on that journey with you!

The Express Collection was created with input from Canadian dance education professionals like you! Here are a few of the reasons Canadian dance studios love our Express Collection...

**WE ARE CANADIAN!** Not just sold in Canada but made in Canada too! Clear pricing in Canadian dollars with no customs, no brokerage, no fluctuating exchange rates...just the assurance of a really great costume at a really great price! Bonus...Your costumes will never be stuck at the border or in a container.

Quantities are limited only by the fabrics available. If you see something you love, early ordering is your best option.



**GLITTER!** Love it or hate it...everyone has an opinion and we listen to you. If you are in the no glitter camp, look for the **GLITTER FREE** emblem on over 125 of our Express Collection designs! If you love a little glitter, don't worry, we still have you covered.

Over ten thousand of our Express Costumes are in stock and ready to ship! In our 10,000 square foot facility in Mississauga, we have dedicated Express Collection production lines! This means inventory is constantly being added to throughout most of the season.

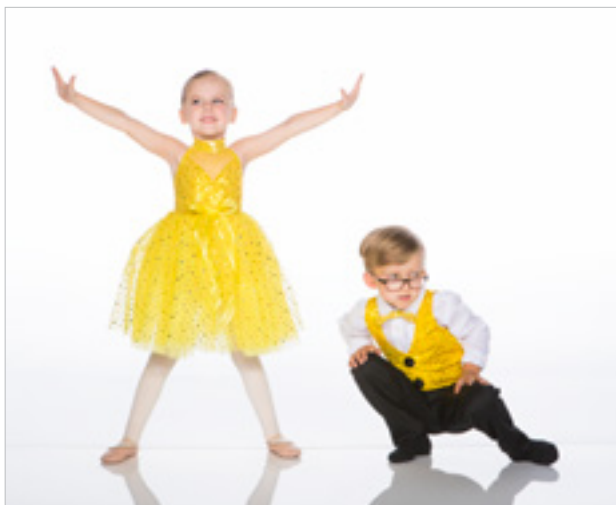
For fabulous recital price points or flexibility on the last-minute group, the Express Collection is another great Jazzamatazz resource for the Canadian Dance Studio!

We hear from you that your dancers felt special and their parents were happy with their Jazzamatazz costumes and that freed you up to focus on bringing your vision to life. From our production team to our client care team, we take that responsibility very seriously!

On behalf of the Jazzamatazz team, we feel privileged to know that many of our studio owners wore Jazzamatazz costumes when they were students themselves. We thank you for choosing our team to partner with your teams for over 30 years!

*Tammy*

Tammy Nancoo, Creative Director



LITTLE ONES 4



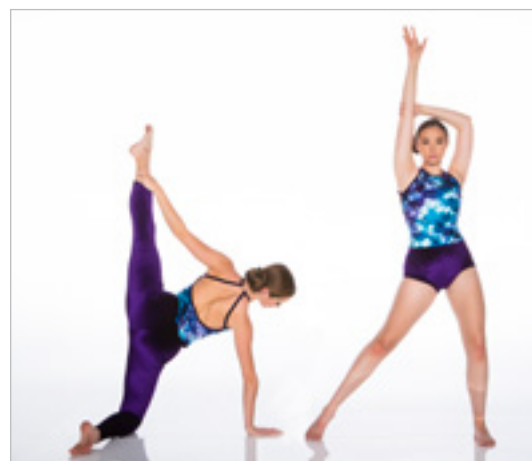
WHAT A CHARACTER 31



TAP & JAZZ 51

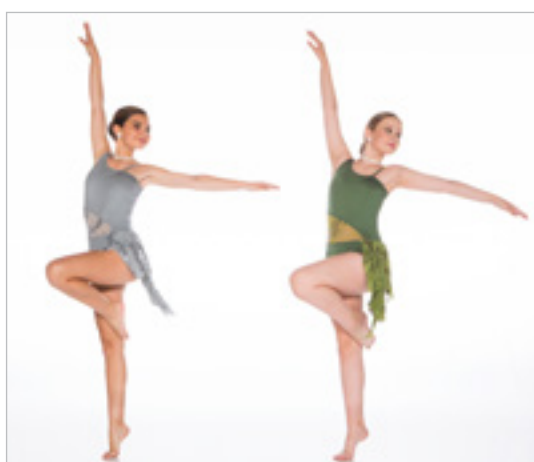


HIP HOP 74

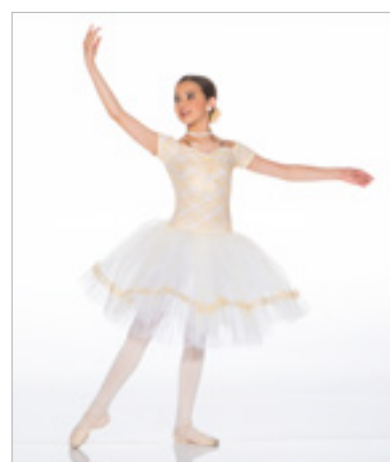


ACRO 90

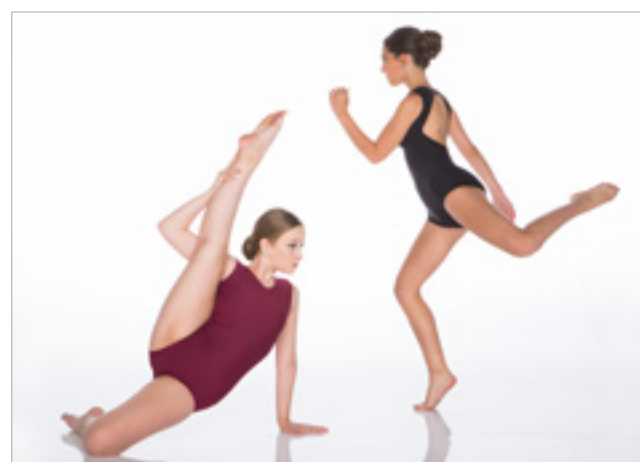
# CONTENTS



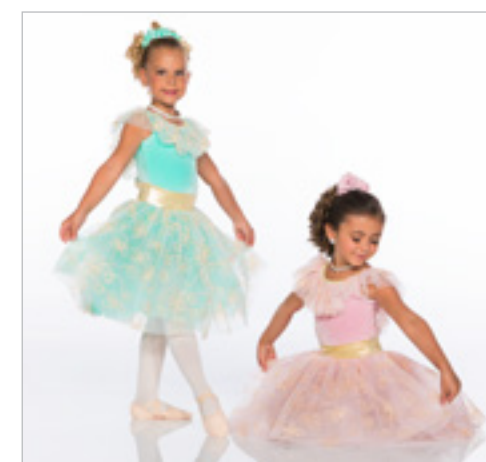
CONTEMPORARY & LYRICAL 102



BALLET 122



BLANK SLATE 128



LIMITED QUANTITIES 134



**HAPPY BIRTHDAY BABY! - X4A • TURQUOISE - X4B • PURPLE - X4C • FUCHSIA**

White velvet bodysuit with sequin tulle puff sleeve and mystique accents. Skirt on separate high waistband of sequin tulle and white organdy. Scrunchie included.



## SUNNY SIDE OF THE STREET - X5A • GIRL - X5B • BOY

GIRL: Empire waist dress features sequin sweetheart on mesh with mystique trim and attached skirt of sequin tulle and organdy, finished with a ribbon bow. Scrunchie included.

BOY: Sequin Vest and mytique bow tie with black pant. Dress shirt not included.



**MY IMAGINATION - X6A • PINK - X6B • PURPLE**

Sequin and foil velvet one shoulder bodysuit with organdy and tulle tutu on separate waistband. Scrunchie included.



**DREAM A LITTLE DREAM - X7A - PINK • X7B - BLUE • X7C - MINT**

Empire waist dress with iridescent sequin bodice, white attached brief features a tulle and organdy attached skirt, all finished with a satin ribbon bow. Sequin hair bow included.



**CANDY WISHES - X8A**

Metallic print bodysuit with neck ruffle and multi-colour tutu on a waistband. Scrunchie included.



### SWEETHEART - X9A

Metallic print pinch front bodysuit with flutter sleeve and heart print trimmed organdy/tulle tutu on a waistband. Scrunchie included.



### PRETTY IN PINK - X9B

Empire waist dress with one shoulder metallic print bodice, attached brief and lightly sparkled tulle skirt. Scrunchie included.



**DARLING ONES - X10A - LILAC • X10B - TURQUOISE • X10C - PINK**

Glitter velvet bodysuit with romantic tutu on waistband. Scrunchie included.



**TEDDY BEAR PICNIC - X11A - AQUA • X11B - LILAC**

Empire waist dress with attached bodysuit and bow detail. Hairbow included.



**FANTASIA - X12A**

Metallic print bodysuit with two layer glitter organdy/tulle skirt on a waistband. Scrunchie included.



**HEART OF GOLD - X12B**

Sequin and metallic print pinch front bodysuit with multi colour tutu on waistband, finished with a sequin bow. Sequin hair bow included.





**BIRTHDAY WISHES - X13A - PINK • X13B - BLUE**

Sweetheart bodysuit with sequin bodice and two layer glitter organdy/tulle skirt on waistband with attached bow. Scrunchie included.



**SWEETIE PIE - X14A**

Metallic print and mint velvet bodysuit with glitter backskirt and bow. Hair bow included.



**SUMMER DAYS - X14B - BLUE**

Sequin and print bodysuit with flutter sleeve and skirt with a pop of organdy crinoline, finished with a sequin bow. Sequin hair bow included.





**CANDYMAN - X15A**

Perfect for combo classes! Sequin and hologram bikertard comes with hologram skirt with a pop of crinoline. Hair bow included.



**THREE LITTLE BIRDS - X16A - PINK • X16B - YELLOW • X16C - RED**

Mystique bodysuit features a lightly glittered and sequined neckruffle and backskirt, finished with a feather boa bustle. Feather hair pouf included.



**CELEBRATION - X17A - PINK • X17B - TURQUOISE**

Sequin and metallic print bodysuit and metallic print skirt with a pop of crinoline. Scrunchie included.



**MACARENA - X18A**

Vibrant print bodysuit with glitter backskirt and attached boa bustle. Hair pouf included.



**BEAT OF MY HEART - X18B**

Metallic print bodysuit with crinoline on a waistband. Scrunchie included.



**SUGAR AND SPICE - X19A - PINK • X19B - PURPLE**

Sequin and foil velvet bodysuit with embroidered mesh puff sleeve and backskirt bouncing over an organdy backskirt, finished with a bow. Hair bow included.



**ITTY BITTY PRETTY ONES - X20A - PEACH • X20B - MINT**

Hologram bodysuit with attached organdy backskirt and boa bustle. Feather hair pouf included.



**HAPPY DAYS - X21A - BOY • X21B - GIRL**

BOY: Metallic print vest with sequin bow tie and black pants. Dress shirt not included.

GIRL: Turtleneck empire halter bodysuit of sequin and metallic print with metallic print skirt bouncing over a full tulle crinoline. Sequin hair bow included.



**GOOD TIMES - X22A - BOY • X22B - GIRL**

BOY: Print and mystique t-shirt with fleece shorts. GIRL: Print and lycra bikertard with mystique trim and side pouf of sequin tulle. Scrunchie included.



**ROUTE 66 - X23A - GIRL • X23B - BOY**

GIRL: Metallic print and mystique halter bikertard has attached structured peplum and tulle neck ruffle. Scrunchie included. BOY: Metallic print and mystique t-shirt with fleece shorts.



**DANCE WITH ME - X24A - BOY • X24B - GIRL**

BOY: Vest with mystique necktie and black classic boy pant. Dress shirt not included. GIRL: Mystique bodysuit with one puff sleeve and attached backskirt with crinoline. Hair bow included.



**BOSS BABES - X25A - RED • X25B - TURQUOISE**

Glitter pinstripe and mesh sweetheart halter bodysuit, trimmed in mystique with attached glitter backsirt and boa bustle. Feather hair pouf included.



**ICE CASTLES - X26A - BOY • X26B - GIRL**

BOY: Iridescent lycra vest, white pant and print bow tie. Dress shirt not included. GIRL: Hologram print bodysuit with glitter crinoline on iridescent waistband. Scrunchie included.



**ICICLES - X27A - BOY • X27B - GIRL**

BOY: Mystique vest, sequin necktie and black pant. Dress shirt not included. GIRL: Sequin and mystique bodysuit with silver and white 2 layer fringe skirt. Feather hair pouf included.



**I'M A BELIEVER - X28A - BOY • X28B - GIRL**

BOY: Glitter velvet vest, mystique bow tie and black pant. Dress shirt not included.. GIRL: Glitter velvet turtleneck halter bodysuit with glitter crinoline skirt on a waistband. Hair bow included.



**CHA CHA - X29A - GIRL • X29B - BOY**

GIRL: Metallic print and lycra one sleeve bikertard with attached 2 layer fringe skirt. Hair scrunchie included. BOY: Metallic print vest with lycra necktie and black pants. Dress shirt not included.



**ZAZU - X30A - BOY • X30B - GIRL**

BOY: Metallic print t-shirt and fleece shorts.

GIRL: Metallic print halter bodysuit with attached backskirt and feather bustle. Feather hair pouf included.



**HOLIDAY - X30C**

Hologram print cold shoulder bodysuit with crinoline on a waistband. Scrunchie included.



**DANCE TO THE MUSIC - X31A - NEON PINK • X31B - NEON GREEN**

Metallic print turtleneck halter baby doll top with neon mystique capri leggings. Scrunchie included.



**KOKOMO - X32A - GIRL • X32B - BOY**

GIRL: Hawaiian print off shoulder bikertard with iridescent mesh ruffle, bow and attached organdy backskirt. Scrunchie included. BOY: Hawaiian print tank and insert in shorts.



**BEACH BABIES - X33A - BOY • X33B - GIRL**

BOY: Polka dot tank top with black fleece shorts. GIRL: Polka dot and mystique pinchfront halter bodysuit with attached double ruffle and bow trim. Scrunchie included.



**PLENTY OF FISH IN THE SEA - X34A - GIRL • X34B - BOY**

GIRL: One sleeve capri length unitard with iridescent mesh ruffles down sides and sleeve. Scrunchie included. BOY: Tye dye t-shirt with iridescent mesh collar and fleece shorts.

**MERMAIDS - X35A - BIKERTARD VERSION • X35B - UNITARD VERSION**

Bikertard Version features hologram seashell prints in a pinch front bikertard accented with lilac mystique flounces, banding and attached organdy backskirt. Scrunchie included.

Unitard Version features hologram seashell prints in a pinch front unitard accented with mystique banding and fin details. Scrunchie included.



**BEDROCK BABIES - X36A - BOY • X36B - GIRL**

BOY: Colourful leopard print jagged t-shirt and black fleece shorts. GIRL: Colourful leopard print and mystique trim bodysuit and jagged skirt with pop of crinoline. Scrunchie included.



**WAY OUT - X37A - GREEN • X37B - ROYAL**

Black hologram bikertard with crinkle print shoulder pads and skirt with mystique accents and pop of crinoline. Scrunchie included.



**BE OUR GUEST - X38A - GIRL • X38B - BOY**

GIRL: Bodysuit with sparkle lace ruffle and skirt with attached apron and crinoline. Scrunchie included..

BOY: Vest with tails, classic boy pant, bow tie and gloves. Dress shirt not included.



**MOUSIN' AROUND - X39A - GIRL • X39B - BOY**

GIRL: Bodysuit with neck ruffle and skirt over a pop of crinoline. Ears with bow hairpiece and gloves included. BOY: Black T-shirt with red fleece shorts. Ears and gloves included.



**COTTON EYE JOE - X40A - GIRL • X40B - BOY**

GIRL: Mystique bodysuit with print tattered neck ruffle and skirt over a pop of crinoline. Two hair ties included. BOY: Mystique and print T-shirt with black fleece shorts.



**BARN DANCE - X41A - GREEN BOY • X41B - GREEN GIRL • X41C - BLUE GIRL • X41D - BLUE BOY**

GIRLS: White mystique bodysuit with gingham neck ruffle and skirt with pop of crinoline. Scrunchie included. BOYS: Gingham t-shirt and white fleece shorts.





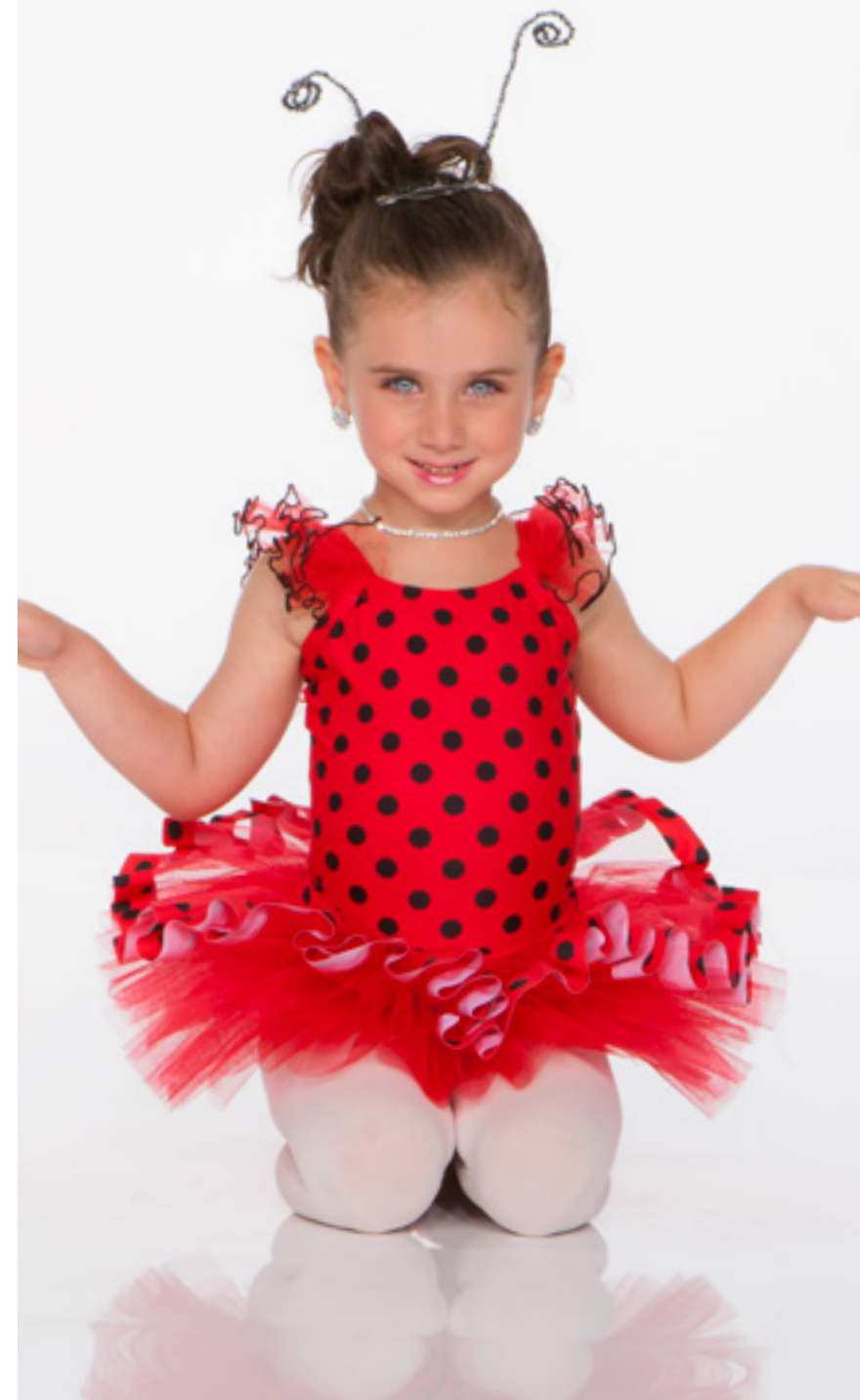
### TEDDY BEAR - X42A

Velvet bodysuit with attached sequin and maribou underbelly and glitter backskirt. Hair piece included.



### BUZZ BUZZ - X42B

Bodysuit with shoulder ruffles and attached backskirt. Hair piece included.



### LADYBUG - X42C

Bodysuit with shoulder ruffles and polka dot trimmed tutu on a waistband. Hair piece included.



**KITTEN - X43A**

Velvet bodysuit with sequin and maribou underbelly with attached glitter organza backskirt. Hair piece included.

**THE LION SLEEPS TONIGHT - X43B**

Metallic velvet bodysuit with attached sequin and maribou underbelly with organza tutu on a waistband. Hairpiece included.

**MONKEY BUSINESS - X43C**

Sequin and foil velvet puff sleeve bikertard with attached sequin and maribou underbelly and maribou tail. Hairpiece included.





**ANIMAL CRACKERS - X44A - ZEBRA • X44B - CHEETAH • X44C - LEOPARD**

One shoulder bodysuit with two toned tattered tutu on waistband. Hair piece included.





**CIRCUS CIRCUS - X45A - BOY • X45B - GIRL • 611 TOP HAT**

BOY: Metallic striped tail vest and bow tie with black pant. Dress shirt and top hat not included. GIRL: Metallic polka dot bodysuit with attached glitter backskirt and boa bustle. Hair pouf included.



**GO TEAM - GIRLS - X46A - RED GIRL • X46B - BLUE GIRL — BOYS - X46C - RED BOY • X46D - BLUE BOY**

GIRLS: Mystique cheerleader dress with attached shorts and sport trim. Hair bow included. BOY: Varsity tank with sport shorts.



## BACK 2 SCHOOL - X47A - RED GIRL • X47B - GREY GIRL • X47C - PINK GIRL • X47D - BOY

GIRLS: Mystique bodysuit with keyhole opening and white collar, metallic plaid sleeves and skirt bouncing over full black crinoline. Hair bow included. BOY: Metallic plaid sweater vest over cotton t-shirt and black pants.



**YOU CAN'T STOP THE BEAT - X48A - GIRL • X48B - BOY**

GIRL: Polka dot off shoulder bodysuit and knee length skirt over full crinoline, all trimmed in mystique. Hair tie included. BOY: Black fleece/mock leather varsity jacket, white cotton t-shirt and black pants.



### MAMA, I'M A BIG GIRL NOW - X49A - PINK • X49B - TURQUOISE

Lightly glittered crinkle velvet cardigan with snap closure over black mystique bodysuit and polka dot skirt on mystique waistband. Hair tie included.



### GREASE IS THE WORD - X49C - GIRL • X49D - BOY

GIRL: Capri length unitard with polka dot pinch front off shoulder bodice and lycra bottom. Sequin belt and necktie included. BOY: Black fleece/mock leather varsity jacket, white cotton t-shirt and black pants.





**THAT BOY IS MINE - X50A - GIRL/UNITARD • X50B - BOY • X50C - GIRL/DRESS**

UNITARD: Keyhole capri unitard with peplum. Lurex belt included. BOY: Print Sweater vest, white cotton t-shirt and black pant. Newsboy cap included.  
DRESS: Print keyhole bodysuit and wetlook skirt over a pop of crinoline. Scrunchie included.



**SHAKE A TAILFEATHER - X51A - TURQUOISE • X51B - PINK • X51C - EMERALD**

Mystique and mesh biketard with attached sequin and lightly sparkled tattered backskirt with feather boa finish. Feather hair pouf included.



**BORN TO BE WILD - X52A - TURQUOISE • X52B - KIWI • X52C - PURPLE • X52D - WHITE • X52E - RED**

Mystique print bikertard with wide criss cross spaghetti straps and peplum. Scrunchie included.



**I LOVE ROCK N ROLL - X53A - GIRL • X53B - BOY**

GIRL: Distressed mystique and mesh bodysuit with black crinoline skirt on a waistband. Scrunchie included. BOY: Distressed mystique t-shirt and black pants.



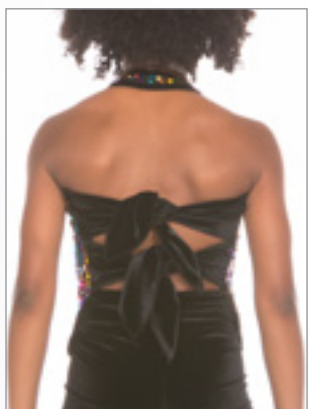
**RIO - X54A - GIRL • X54B - BOY**

GIRL: Sequin trimmed mystique print bodysuit with one long sleeve and attached two toned tattered backskirt. Hair pouf included. BOY: Mystique print vest and necktie with black pants. Dress shirt not included.



**GUYS AND DOLLS - X55A - BOY • X55B- GIRL • 609- FEDORA**

BOY: Diamond mystique vest and tie with black pants. Dress shirt and fedora not included. GIRL: Diamond mystique and mesh sweetheart halter slit dress. Lycra brief included.



**FIREWORK - X56A - GIRL • X56B - BOY**

GIRL: Multi colour sequin and velvet tie top with velvet high-waisted capri leggings. BOY: Velvet T-shirt with sequin chest insert and black fleece shorts.



**WORTH IT - X57A - YELLOW • X57B - RED • X57C - WHITE**

Polka dot mesh over mystique bodice and peplum with attached black lycra capri leggings and accents. Scrunchie included.



**LIGHTNING STRIKES - X58A - TURQUOISE • X58B - RED**

One Shoulder mystique print bikertard with attached structured peplum. Scrunchie included.



**I'M SO EXCITED - X59A - TURQUOISE • X59B - FUCHSIA • X59C - PURPLE**

Turtleneck halter bikertard features lightly glittered textured velvet bodice and structured peplum with hologram print bike short bottom and accents. Scrunchie included.



**SIZZLE - X60A - GIRL • X60B - BOY**

GIRL: Diamond mystique pinch front off shoulder bodysuit has banded contemporary legline. BOY: Diamond mystique fitted tank and black pant.



**FEVER - X61A - BOY • X61B - GIRL**

BOY: Diamond mystique vest and black pant. Dress shirt not included. GIRL: Off shoulder pinch front bikertard has diamond mystique bodice, mystique booty short bottom and two layers of fringe attached.



**HOT AND COLD - X62A - SILVER • X62B - RED**

Sweetheart bikertard with mesh inserts. Scrunchie included.



**I PUT A SPELL ON YOU - X63A - GIRL • X63B - BOY**

GIRL: Bikertard features lightly glittered velvet bodice and tails with mystique booty short bottom, trim and attached red satin waistband. Red feather hair pouf included.

BOY: Glitter velvet vest, red satin necktie and black pant. Dress shirt not included.



**MY WEB - X64A - GIRL • X64B - BOY**

GIRL: Bikertard with print bodice, lycra booty short bottom, mystique waistband and cross front banding with attached two layer tattered backskirt. Hair pouf included. BOY: Print/mystique t-shirt with black pants.



**WILD CHILD - X65A**

Sequin leopard print and lycra tie-back top with lycra high-waisted booty shorts.

**REPLAY - X65B - BOY • X65C - GIRL**

BOY: Colour-blocked T-shirt in hologram and mystique with black pants. GIRL: Mesh, hologram and mystique bikertard. Scrunchie included.



**POP MUSIC - X66A - PINK • X66B - GREEN**

Mystique and metallic print bikertard and structured peplum. Scrunchie included.



**BOUNCE - X67A - BLUE/GREEN • X67B - RED/PURPLE**

Waist length cropped hoodie in lurex stripe with denim print bike shorts.



**THE RHYTHM IS GONNA GET YOU - X68A - LIME • X68B - ROYAL**

Off-Shoulder lycra bodysuit with pleated print ruffle and skirt on a mystique waistband. Scrunchie included.



**SUPERSTITION - X68C - GIRL • X68D - BOY**

GIRL: Sequin tie dye jersey slip dress with attached lycra bikertard and mystique banding. Scrunchie included.  
BOY: Sequin tie dye jersey vest, mystique necktie and black pants. Dress shirt not included.

**FEEL IT STILL - X69A- GIRL • X69B - BOY**

GIRL: Slip dress of lightly glittered textured velvet with attached lycra bikertard and mystique trim. Scrunchie included. BOY: Textured glitter velvet vest, mystique necktie and black pants. Dress shirt not included.



**ELECTRIC - X70A**

Bike short length sweetheart bikertard in mystique print with mystique banding and waistband. Scrunchie included.



**SUNSET SHAKE - X70B**

Cropped t-shirt with dangling sequin adornment for maximum impact paired with crushed velvet high-waisted booty shorts.



**SING MY SONG - X71A - TURQUOISE • X71B - LIME • X71C - LILAC • X71D - WHITE • X71E - PINK**

Versatile pinch front halter dress with mystique accents and attached brief. Scrunchie included.



**I FEEL GOOD - X72A**

Print and mystique bikertard with two rows of fluorescent yellow fringe attached. Scrunchie included.



**CAUGHT UP - X72B**

Bikertard with metallic print sweetheart bodice. Scrunchie included.



**TEAM SPIRIT - X73A - ROYAL • X73B - YELLOW • X73C - RED**

Supplex bike shorts with lycra side insert, lycra t-back bra top and cropped mesh t-shirt.



**LIFE IS GOOD - X74A - BOY • X74B - GIRL**

BOY: Pullover hoodie of sequin jersey and white fleece paired with side insert joggers. GIRL: Cropped pullover hoodie of sequin jersey and white fleece paired with side insert joggers.



**JUMP! - X75A - YELLOW GIRL • X75B - PINK GIRL • X75C - BLUE GIRL • X75D - YELLOW BOY**

GIRL: Black mystique bike shorts and t-back bra top with colourful sport mesh scoop tank. Black toque included. BOY: Black cotton t-shirt, joggers and sport mesh scoop tank. Black toque included.



**ALL TALK - X76A - BOY • X76B - GIRL**

BOY: Crew neck sweatshirt with fleece body and red mock suede sleeves paired with fleece/mock suede side insert joggers. Black toque included.

GIRL: Crew neck sweatshirt with fleece body and red mock suede sleeves paired with mock suede bike shorts.



**BAD - X77A - BOY • X77B - GIRL**

BOY: Sleeveless pullover hoodie in red metallic fishnet over black cotton t-shirt and fleece joggers. GIRL: Cropped pullover hoodie in red metallic fishnet over black mystique bikertard.



**IT'S POPPIN' - X78A - BOY • X78B - YELLOW/GIRL • X78C - PINK/GIRL • X78D - BLUE/GIRL**

BOY: Athletic mesh scoop tank over white T-shirt and knee insert joggers. GIRL: Athletic mesh hi/low tank over white tank top and knee insert joggers.



**FRESH KIDS - X79A - GIRL • X79B - BOY**

GIRL: Girly bomber jacket, white t-back bra top and white joggers. BOY: Bomber jacket, white t-shirt and white joggers.



**STEREO HEARTS - X80A - GIRL • X80B - BOY**

GIRL: Metallic print T-shirt with grey heathered high-waisted leggings. Toque included. BOY: Metallic print T-shirt with black fleece joggers. Toque included.



**ANYONE - X81A- GIRL • X81B - BOY**

GIRL: Cowl neck cropped sweatshirt with high-waisted supplex print leggings. BOY: Scoop t-shirt with side insert white fleece/print joggers.



**SNAP - X82A - BOY • X82B - GIRL**

BOY: Hologram/print t-shirt with turquoise fleece joggers. GIRL: Bike short length bikertard with metallic print bodice, side insert bike short bottom and hologram details.



**ALL I DO IS WIN - X83A- BOY • X83B - GIRL**

BOY: Metallic print/cosmo t-shirt with black joggers. GIRL: Metallic print/cosmo cropped t-shirt with front insert leggings.



**TURN DOWN FOR WHAT - X84A - BOY • X84B - GIRL**

BOY: Lurex striped scoop tank, black cotton t-shirt and black fleece joggers. GIRL: Lurex striped cropped hoodie, black tank top and black fleece joggers.



**NO LIMITS - X85A - GIRL • X85B - BOY**

GIRL: Cracked ice and hologram semi-fitted t-shirt with hologram bike shorts. BOY: Hologram/cracked ice t-shirt with side insert joggers.



**PARTY ANIMAL - X86A - GIRL/CRINOLINE • X86B - BOY • X86C - GIRL/RIGHT**

GIRL/CRINOLINE: Graphic cropped t-shirt, high-waisted mystique print capri leggings and black tulle crinoline skirt  
GIRL ON RIGHT: Graphic cropped t with high-waisted mystique print capri leggings.

BOY: Graphic T with black joggers





**STAR BOY - X87A- BOY • X87B - GIRL**

BOY: Sequin print and fleece varsity jacket, black cotton t-shirt and fleece joggers. GIRL: Sequin print and fleece girly varsity jacket, black T-back bra top and fleece joggers.



**STRATEGIC - X88A - BOY • X88B - GIRL**

BOY: Hologram camo print scoop t-shirt and black joggers. Black toque included. GIRL: Hologram camo print cropped t-shirt and black joggers. Black toque included.



**NOW OR NEVER - X89A - BOY • X89B - GIRL**

BOY: Long scooped zip front hooded vest , black cotton t-shirt and black joggers. GIRL: Long scooped zip front hooded vest, black 3/4 sleeve crop top and high-waisted leggings.



**RIVER DEEP - X90A - BOY • X90B - GIRL**

BOY: Print contemporary tank with matte lycra contemporary capri. GIRL: One sleeve print and sequin bikertard with mystique accents. Scrunchie included.



**DELIVER US - X91A - UNITARD • X91B - BODYSUIT**

UNITARD: Beautiful printed velvet bodice with purple velvet ankle length bottom.    BODYSUIT: Beautiful printed velvet bodice with banded contemporary legline in purple velvet.



**WELCOME TO THE JUNGLE - X92A - CHEETAH • X92B - ZEBRA • X92C - LEOPARD**

Long sleeve zip back bikertard with banded legline.



**INSTINCT - X93A**

Asymmetrical unitard with one banded leg and one ankle length. Scrunchie included.



**I CAN SEE CLEARLY NOW - X94A**

Pastel tie-dye velvet spaghetti strap unitard with asymmetrical leg line. Scrunchie included.



**LOOK UP CHILD - X94B - MINT • X94C - LILAC**

Capri length velvet and sequin unitard with mystique accent. Scrunchie included.



**WISHING ON A RAINBOW - X95A - PINK • X95B - TURQUOISE**

Capri length unitard with sequin bodice and rainbow print lycra. Scrunchie included.



**ELEMENTS - X96A - BLUE • X96B - GOLD**

Hologram cold shoulder bikertard with keyhole back. Scrunchie included.



**BEAUTIFUL - X97A - RED • X97B - GOLD**

Bikertard has lace over mystique keyhole bodice, velvet bottoms and mystique accents.



**VORTEX - X98B**

Metallic print zip back bikertard. Scrunchie included.



**JAR OF HEARTS - X99A - BODYSUIT - X99B - UNITARD**

BODYSUIT: Burgundy wetlook velvet and mesh with a banded contemporary legline. UNITARD: Burgundy wetlook velvet and mesh, ankle length unitard.



**JUST LIKE FIRE - X100A - BODYSUIT • X100B - UNITARD**

BODYSUIT: Iridescent metallic lycra and mesh insert bodysuit with banded contemporary legline. UNITARD: Iridescent metallic lycra and mesh insert capri length unitard.



**HOLD ON - X101A - CAPRI UNITARD • X101B - BODYSUIT**

UNITARD: Hologram and lace in cap sleeve insert capri length unitard. BODYSUIT: Hologram and lace in cap sleeve insert bodysuit with banded contemporary legline.



**KEEP BREATHING - X102A - LILAC • X102B - BLACK**

Hologram and mesh insert bodysuit with 3/4 sleeve and banded contemporary legline.



**YOU BROKE ME FIRST - X103A - ROYAL • X103B - GREY • X103C - TEAL**

Ombre bodysuit with banded contemporary legline and beautiful cutaway back.



**TURN TO STONE - X104A - GIRL/TWO PIECE • X104B - BOY • X104C - GIRL/BODYSUIT**

GIRL/TWO PIECE: Short sleeve mesh and supplex bra top with fully lined and banded contemporary brief. BOY: Supplex contemporary tank and capri pant.  
BODYSUIT: Sleeveless supplex and mesh insert bodysuit with fully lined and banded contemporary brief legline.





**DAYBREAK - X105A - WHITE • X105B - GREY**

Bodysuit with fully lined and banded contemporary brief bottom, lace keyhole bodice, mystique accents and included v-neck halter bra top.



**IN THE AIR TONIGHT - X106A - GREY • X106B - OLIVE**

Matte lycra contemporary bodysuit with banded legline, insert and side detail in sequin mesh.

**BETTER DAYS - X107A - PEACH • X107B - IVORY • X107C - EGGPLANT • X107D - TEAL**

Sequin mesh overdress attached to a lined contemporary bodysuit with banded legline has crossover neckline and beige straps for added support.



### **GODDESS - X108A**

White/gold one shoulder bodysuit with pleated chiffon skirt, slit to waist on both sides on gold waistband. Scrunchie included.



### **PARADISE - X108B**

Off shoulder, pinch front printed mesh dress over attached bikertard. Scrunchie included.



**HOW FAR I'LL GO - X109A**

Printed mesh dress attached to bodysuit with banded contemporary legline. Scrunchie included.



**TRUE COLOURS - X110A**

Soft metallic rainbow mesh dress over lycra with attached booty short. Scrunchie included.



**SUNRISE - X110B**

Sparkle velvet off shoulder pinch front dress with tie dye sequin chiffon skirt and attached bikertard. Scrunchie included.



**WE BELONG - X111A - BEIGE • X111B - BURGUNDY**

Metallic wash lace slip dress on attached gold mystique bikertard. Scrunchie included.



**HOME - X112A**

Heart print cap sleeve dress with keyhole back and attached brief. Hair bow included.



**NATURAL WOMAN - X112B**

Wrap front dress with attached brief and pinch front bra top included.



**A BEAUTIFUL LIFE - X113A - RED • X113B - BLACK • X113C - FOREST • X113D - FUCHSIA**

Velvet spaghetti strap bodysuit and pleated chiffon hi/low skirt with mystique accents. Scrunchie included.





**THE LONELY - X114A - BURGUNDY • X114B - GOLD**

Cap sleeve dress with keyhole back has lace over mystique bodice, attached brief and black pleated chiffon hi/low skirt. Scrunchie included.



**UNWRITTEN - X115A - BEIGE • X115B - RED • X115C - BLACK**

Mesh 3/4 sleeve slit tunic dress over spaghetti strap lined contemporary bodysuit with banded legline.



### EMERALD CITY - X116A

Metallic varigated mesh dress has keyhole back and attached brief. Scrunchie included.



### YOU ARE MY SUNSHINE - X116B

Sequin varigated mesh dress has keyhole back and attached brief. Scrunchie included.



**REMEMBER WHEN - X117A - BURGUNDY • X117B - OLIVE**

Sweetheart dress with hi/low skirt and attached brief. Scrunchie included.



**HONOUR - X118A**

Brown lycra bodysuit with deep printed chiffon neck ruffle and long skirt on waistband, slit to waist on both sides.



**SILVER LININGS - X119A**

Sequin lace sweetheart bodice in dress with knee length mesh skirt and attached brief. Scrunchie included.



**CANDLE IN THE WIND - X120A - TURQUOISE • X120B - PINK**

Lightly glittered textured velvet off shoulder bodice with attached mesh skirt and attached brief. Scrunchie included.



**LE JARDIN - X121A - PINK • X121B - SAPPHIRE**

Mystique bodysuit with deep neck ruffle and skirt on waistband slit to waist on both sides in a beautiful pleated floral.



**MELODY - X122A - PLUM • X122B - ROYAL**

Sweetheart glitter velvet and mesh bodice with georgette skirt and attached brief. Scrunchie included.



**PENNIES IN HEAVEN - X123A - IVORY • X123B - BLACK**

Matte lycra bodysuit with metallic tulle neck ruffle, two layer metallic tulle/organdy skirt on mystique waistband. Scrunchie included.



**TREASURES - X124A - SAPPHIRE • X124B - BURGUNDY • X124C - GREEN**

Glitter velvet bodysuit with romantic glitter organdy/tulle on a waistband. Scrunchie included.

**BELLE - X125A**

Soft gold metallic lace over white lycra off shoulder, pinch front bodysuit and organdy/tulle romantic tutu on a waistband, finished with lace ribbon detail. Scrunchie included.

**MONET - X125B**

Textured velvet pinch front bodysuit with multi colour romantic tutu on a waistband. Scrunchie included.



### DREAM COME TRUE - X126A

Fuchsia lace over gold mystique pinch front bodysuit with romantic tutu on a waistband, finished with gold ribbon detail. Scrunchie included.



### SPRING SONG - X126B

Spaghetti strap velvet bodysuit with metallic lace overlay and romantic tutu on a waistband, finished with lace ribbon. Scrunchie included.



**DAYDREAMERS - X127A - LILAC • X127B - PINK • X127C - ORANGE**

Velvet bodysuit with metallic lace ruffle. Two layer tulle skirt on high waistband with lace ribbon detail. Scrunchie included.



## BLANK SLATE COLLECTION

THE BLANK SLATE COLLECTION IS A COLLECTION OF PIECES THAT CAN STAND ALONE OR BECOME THE PERFECT CANVAS FOR YOU TO EXPRESS YOUR CREATIVITY.

STONE THEM, PAINT THEM OR APPLIQUE THEM FOR A SOLO, DUET OR GROUP THAT WILL BE UNIQUELY YOURS!

WHAT WILL YOU WRITE ON YOUR BLANK SLATE?



**CONTEMPORARY BODYSUIT WITH INSERTS - X129A - BURGUNDY • X129B - BLACK**

Matte lycra and mesh insert bodysuit with long sleeve and banded contemporary legline.



**PINCH FRONT CONTEMPORARY BODYSUIT - X130A - BLACK • X130B - BURGUNDY**

Matte lycra pinch front fully lined spaghetti strap contemporary bodysuit with banded legline.



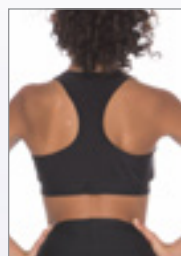
**KEYHOLE CONTEMPORARY BODYSUIT - X131A - BURGUNDY • X131B - BLACK**

Matte lycra high neck fully lined contemporary bodysuit with deep keyhole back and banded legline.



## SWEETHEART BODYSUIT - **X132A - BLACK • X132B - BURGUNDY**

Matte lycra and mesh sweetheart bodysuit, front lined with classic elastic finish legline.



**T-BACK BRA TOP - X133A - BLACK ONLY**  
**HIGH-WAISTED BOOTY SHORTS -**  
**X133B - BLACK ONLY**



**CRINOLINE ON A WAISTBAND X133C - BLACK ONLY**  
Black hard tulle crinoline on a waistband.



**TUTU ON A WAISTBAND -X133D - BLACK ONLY**  
a



**BUTTERFLY - XLQ 1 - MINT • XLQ 2 - PINK**



**WHEN I GROW UP - XLQ 3**



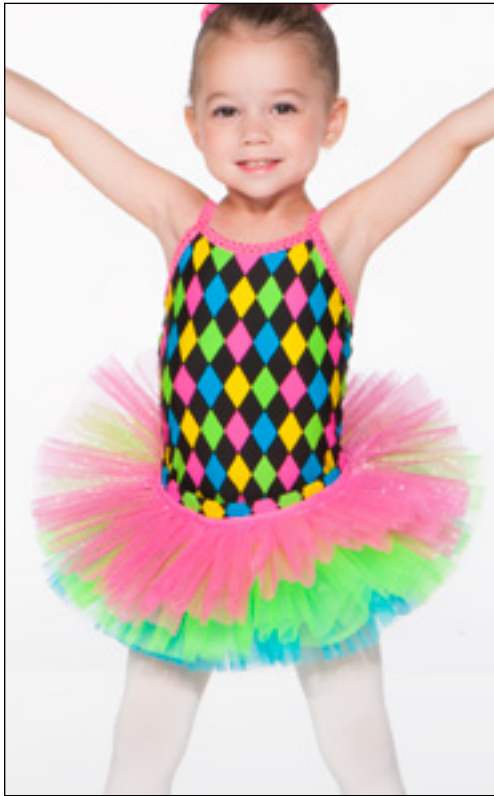
**SPRING FLOWERS - XLQ 4**



**SO DO YOU WANT TO BUILD A SNOWMAN - XLQ 5 - BOY\* • XLQ 6 - GIRL**



**LULLABYE  
XLQ 7**



**BRING IN THE CLOWNS - XLQ 8**



**LOLLIPOP - XLQ 9 - PINK • XLQ 10 - LIME • XLQ 11 - ORANGE**



**UNDER THE SEA - XLQ 12**



**5,6,7,8 - XLQ 13 - GIRL • XLQ 14 - BOY**



**Great Designs  
that are still  
available  
in limited  
quantities.**

Check the  
inventory sheet  
on our website  
for availability.  
It will also tell  
you whether you  
can place any  
missing sizes on  
backorder!



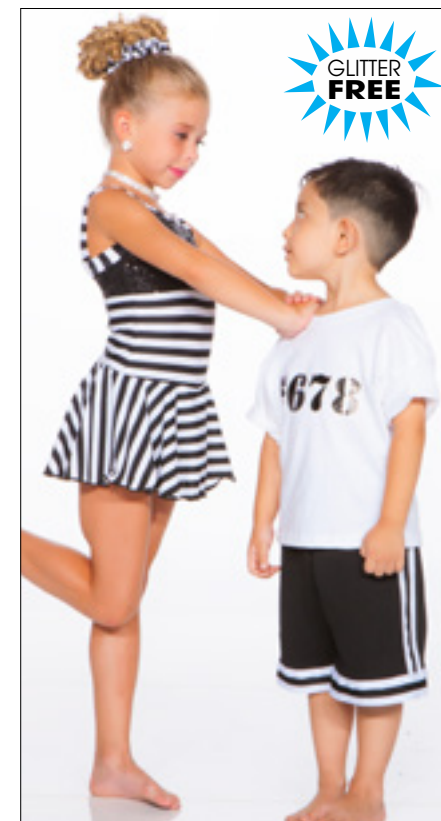
**SHOUT -  
XLQ 15 - GIRL  
XLQ 16 - BOY**



**WILDCATS** - XLQ 117 - GREEN • XLQ 18 - ORANGE GIRL • XLQ 19 - PINK • XLQ 20 - ORANGE BOY



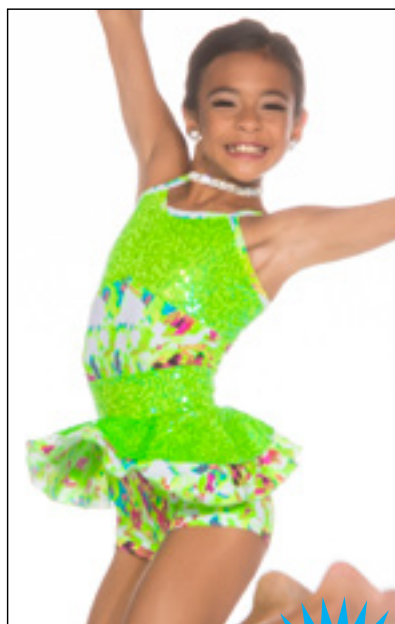
**WATCH ME DANCE** - XLQ 21 - GIRL • XLQ 22 - BOY



**JAILHOUSE ROCK**  
XLQ 23 - GIRL • XLQ 24 - BOY



**MOVE IT** -  
XLQ 25 - GIRL  
XLQ 26 - BOY



**DYNAMITE** - XLQ 27

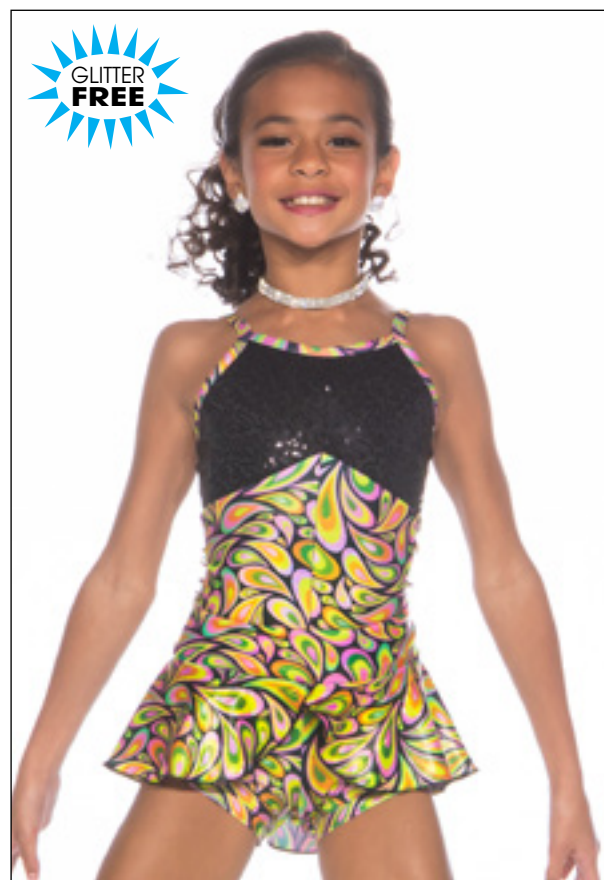
AVAILABLE IN  
LIMITED  
QUANTITIES  
EMAIL US FOR  
SIZES!



**SCHOOL HOUSE ROCK** -  
XLQ 28



**HIGHER GROUND - XLQ 29**



**THINK - XLQ 30**



**BOSS - XLQ 31 - GIRL • XLQ 32 - BOY** (Dress shirt and Fedora not included)



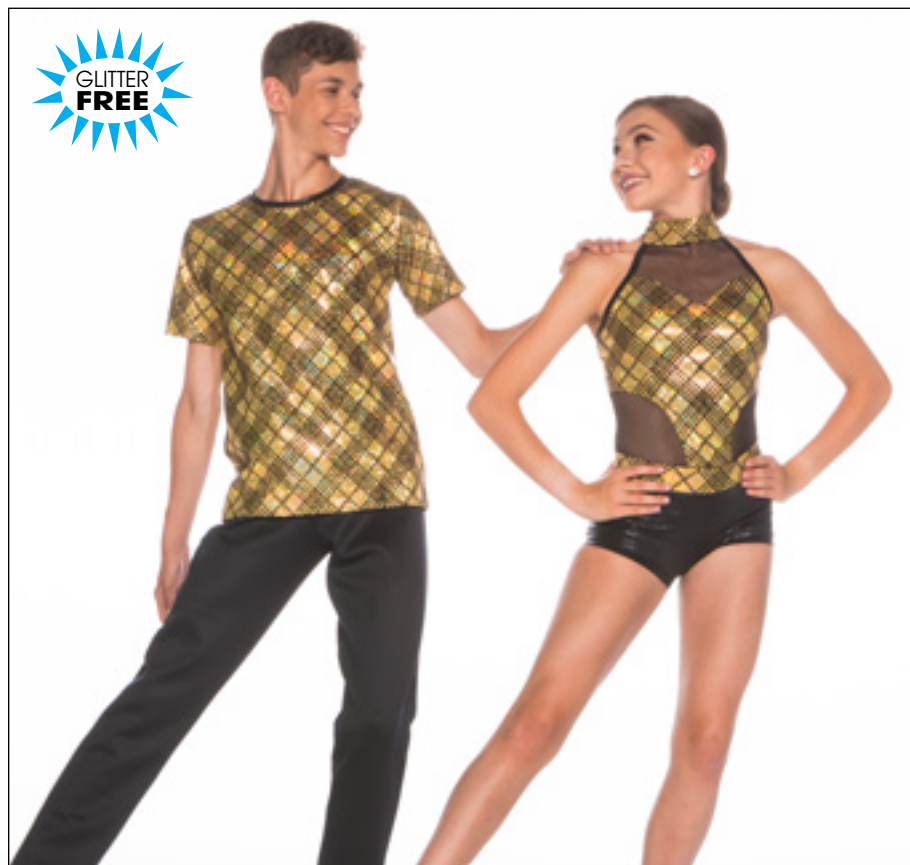
**BETTER - XLQ 33 - GREEN • XLQ 34 - PURPLE**



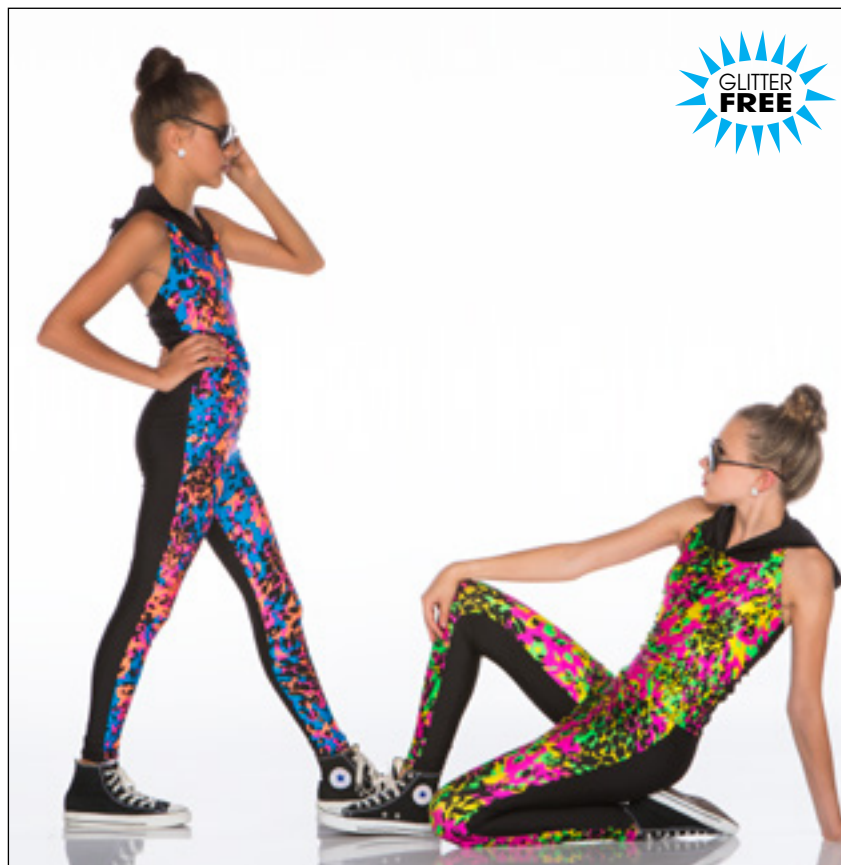
**SLOW ME DOWN - XLQ 35**



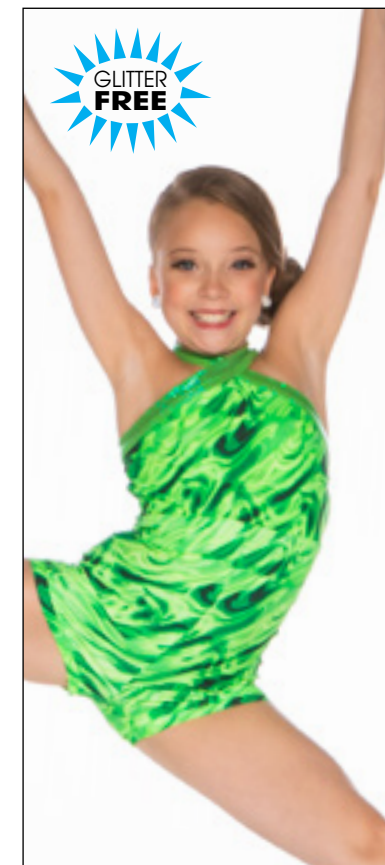
**SHE'S GOT THE POWER - XLQ 36**



**CAN'T STOP THE FEELING** - XLQ37 - BOY • XLQ38 - GIRL



**SOME GIRLS** - XLQ39 - BLUE/PINK OY • XLQ40 - PINK/YELLOW



**EARTH SONG** - XLQ 41



**I DON'T CARE**  
XLQ 42 - BOY  
XLQ 43 - GIRL

AVAILABLE IN  
LIMITED  
QUANTITIES

EMAIL US  
FOR SIZES!



**DIVERSION** - XLQ 44 - GIRL GREY  
XLQ 45 - BOY • XLQ 46 - GIRL BLUE



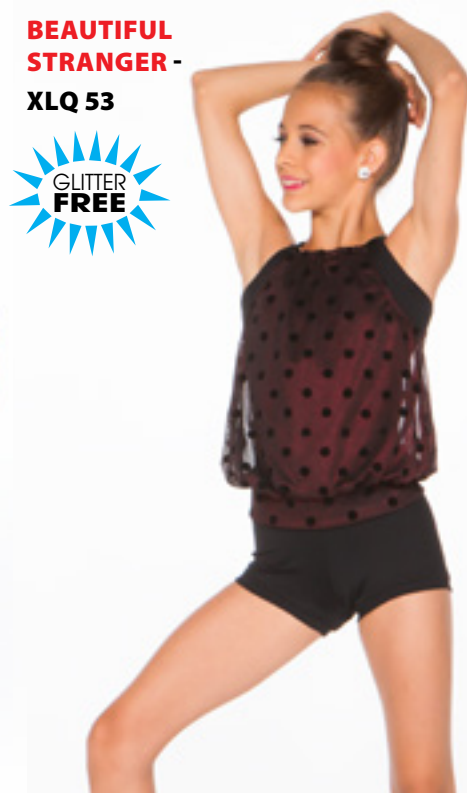
**DON'T YOU REMEMBER? - XLQ 47 - BOY • XLQ 48 - GIRL**



**ILLUSIONS - XLQ 49 - IVORY • XLQ 50 - ROYAL • XLQ 51 - PURPLE**



**HUMAN NATURE - XLQ 52**



**BEAUTIFUL  
STRANGER -  
XLQ 53**



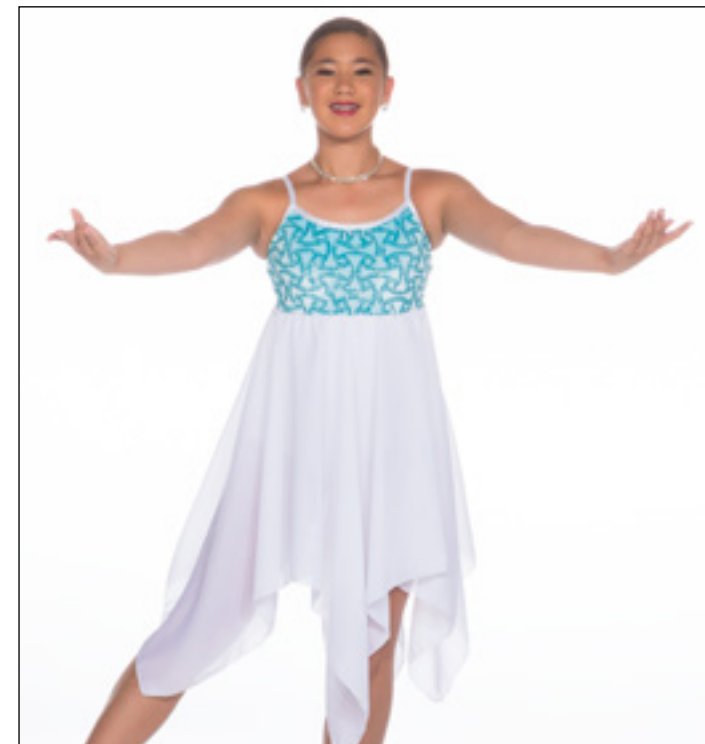
**JEWELS -  
XLQ 54 - PLUM  
XLQ 55 - RUBY**



**CIRQUE** - XLQ 56 - LIME • XLQ 57 - TURQUOISE • XLQ 58 - RED



**COME ON OVER** - XLQ 59



**FROZEN HEART** - XLQ 60



**SLEIGH RIDE** - XLQ 61



**SHATTERED ICE** - XLQ 62



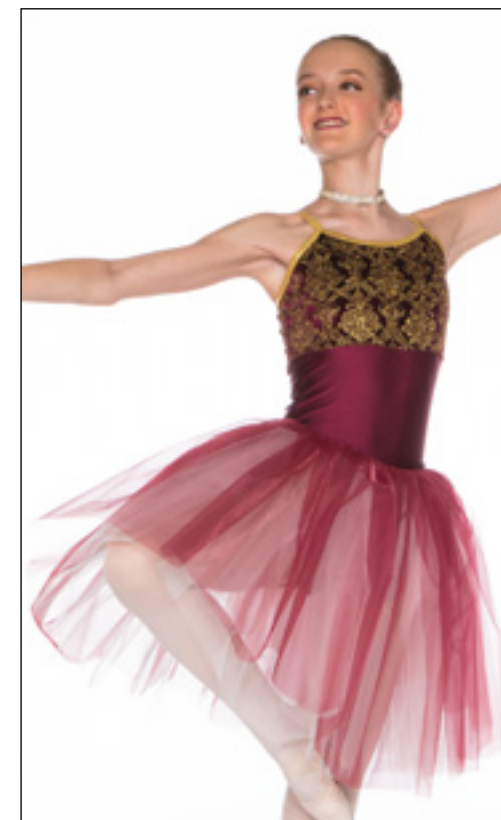
**MORNING HAS BROKEN** - XLQ 63



**OCEANS - XLQ 64**



**SILVER BELLS - XLQ 65**



**ELEGANCE - XLQ 66**



**SNOW QUEEN - XLQ 67**



**TORN - XLQ 68**

AVAILABLE IN  
LIMITED  
QUANTITIES  
EMAIL US FOR  
SIZES!



**BLACK LONG SLIT SKIRT - SKIRT ONLY - XLQ 69**

## ORDERING INFO

Please submit your order on our two part order form available on our website [www.costumesbyJazzamatazz.com](http://www.costumesbyJazzamatazz.com). The filled out form can be mailed, faxed to 905-542-8026 or printed out, scanned and emailed.

**QUANTITIES** are limited to fabrics available. We will indicate in our inventory list whether back orders are available on each item or not.

**THE EARLY ORDER DISCOUNTS** from Performance Collection DO NOT apply to the Express Collection as it is already a value priced collection.

**RETURNS** are not accepted, except in the case of manufacturer defect.

**We cannot accept returns on unclaimed or extra costumes once they have been shipped to you.**

**EXCHANGES** will be accommodated where possible but we cannot guarantee availability. Costumes must be unworn, unaltered and not have names written on inside garment tags to be eligible for exchange. **Costumes must be exchanged in sellable condition.**

### **ORDERS MUST BE PAID IN FULL PRIOR TO SHIPPING**

Orders may be paid for by Visa, Mastercard, E-Transfer or Debit in the case of in-person shopping.

Our team is here to help! If you have any questions at all, please give us a call at 905-542-0605 or email us at [info@costumesbyjazzamatazz.com](mailto:info@costumesbyjazzamatazz.com), we would love to speak with you!

**Discover for yourself why the Express Collection is the Canadian Dance Teacher's Favourite Resource!**

Quantities are limited.  
Check [www.costumesbyJazzamatazz.com](http://www.costumesbyJazzamatazz.com)  
for the most current inventory levels!

★ Coming in November ★  
Check out our online shopping carts for a new clearance section featuring a selection of discontinued costumes offered at  
**50% off**

Same great Jazzamatazz quality, designed to solve budget and time constraints.

Studio owners can email us at  
[costumesbyjazzamatazz@gmail.com](mailto:costumesbyjazzamatazz@gmail.com)  
for your price list.

**JAZZAMATAZZ**  
The Express Collection

4 -2330 Southfield Road, Mississauga, Ontario L5N 2W8  
**905-542-0605**

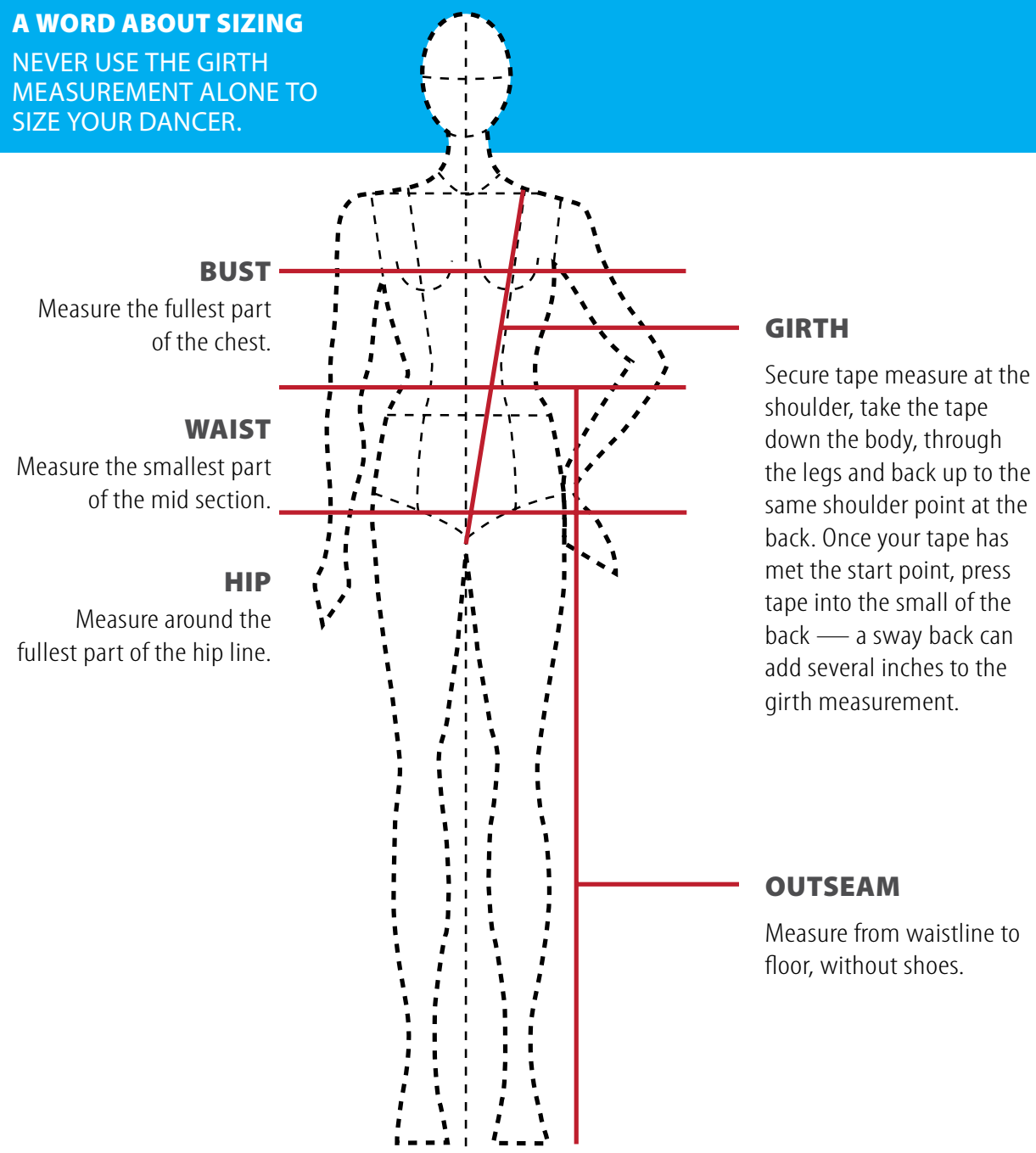
Children's Sizes	Bust	Waist	Hip	Girth	Outseam
3 - 3X	20	20	20 - 22	34 - 36	23
4 - 5	22	21	22 - 23	36 - 39	25
6 - 6X	23	21.5	23 - 25	40 - 42	28
7 - 8	24	22	25 - 27	43 - 45	33
8 - 10	25	23	27 - 29	45 - 47	35
10 - 12	26	24	29 - 30	47 - 49	37
12 - 14	28	25	30 - 32	49 - 52	38
14 - 16	30	26	32 - 34	52 - 54	39
Children's Plus Sizes					
7 - 8 PLUS	26.5	26.5	29	46 - 48	33
8 - 10 PLUS	27.5	27.5	31	49 - 51	35
10 - 12 PLUS	28.5	28.5	33	51 - 54	37
12 - 14 PLUS	30.5	30.5	35	54 - 57	38
14 - 16 PLUS	32.5	32.5	37	57 - 60	39
Adult Sizes					
X-Small	31 - 32	24 - 25	32 - 34	54 - 55	39
Small	32 - 34.5	25 - 27	34 - 36	55 - 57.5	40
Medium	35 - 37.5	27 - 29	36 - 38	57.5 - 60	41
Large	38 - 40	29 - 31	38 - 41	60 - 63	42
X-Large	40 - 42	31 - 34	41 - 44	63 - 65	43
XX-Large	42 - 45	34 - 38	44 - 48	65 - 68	43
Boys Sizes					
3 - 3X	20	20	20 - 22		23
4 - 5	22	21.5	22 - 23		25
6 - 6X	23	22.5	23 - 25		28
7 - 8	24	23.5	25 - 27		33
8 - 10	25	24.5	27 - 29		35
10 - 12	26	25.5	29 - 30		37
12 - 14	28	27.5	30 - 32		38.5
14 - 16	30	28.5	32 - 34		40
Men's Sizes					
Small	32 - 34.5	31	33 - 35		41
Medium	35 - 37	33	35 - 37		42
Large	38 - 40	36	37 - 40		44
X-Large	40 - 42	38	40 - 43		45

## MEASURING TIPS

Always measure as close to the body as you can.  
Your dancer should be in a bodysuit or other close fitting dancewear.

## A WORD ABOUT SIZING

NEVER USE THE GIRTH MEASUREMENT ALONE TO SIZE YOUR DANCER.



# JAZZAMATAZZ

The Express Collection

