



JAZZAMATAZZ

THE SPOTLIGHT COLLECTION

2025

THE SPOTLIGHT COLLECTION

The Spotlight Collection is a group of Performance style costumes, with the added bonus of being in stock! They feature the same level of detail, the same extra bounce in the crinolines but with no minimums and no back orders. The Spotlight Collection is made in our Mississauga facility, in accordance with our 100% MADE IN CANADA commitment!

Whether these costumes step on stage as they are or serve as a canvas for your creative embellishment, we think you will love the convenience and quality of the Spotlight Collection for groups, solos, duets and trios.

The Spotlight Collection costumes are available in person as well as in shopping carts. There are no back orders available on this collection but if they haven't been produced yet, you can pre-order exactly the sizes you need, using our order form. Check the Current Inventory spreadsheet on our website to see the status of the group you love! The Spotlight Collection will be fully in stock by early January and when they are gone, they are gone.

We invite you to step into The Spotlight!



Proudly made in Canada
for over 30 years



MERMAID PARTY

SP3A - PURPLE
SP3B - AQUA

Bikertard with side cutouts, bouncy backskirt and flounces, all finished with a bow.



PRETTY IN PINK **SP4A**

Prism hologram and mystique in this sweet zip back bodysuit and skirt over a super bouncy crinoline, all finished with a bow. Hair bow included.



HAPPY TOGETHER

- SP5A - LIME**
- SP5B - HOT PINK**
- SP5C - YELLOW**
- SP5D - TURQUOISE**

Dotted mesh over mystique bodysuit and skirt over super bouncy crinoline. Dotted mesh shrug finished with a bow. Hair bow included.



HEAVEN HOP **SP6A**

Sequin, mesh and mystique bodysuit with banded legline and side cutouts is paired with a sequin skirt, trimmed out in marabou over a bouncy blue crinoline. Hair bow included.



BETTER WHEN I'M DANCING

SP7A - PINK
SP7B - YELLOW
SP7C - LILAC

Low shed glitter flocked lycra bodysuit and skirt over a colourful bouncy crinoline is finished with a puff sleeve mystique shrug. Hair bow included.



SHE'S GOT THE LOOK **SP8A**

Colourful print long sleeve shrug and banded brief with backskirt over a purple back crinoline. Purple sequins add the punch in the bra top and bow.



MY GIRL **SP9A**

Heart print puff sleeve collared crop top and skirt bouncing over a lilac glitter crinoline, all finished with a rhinestone heart buckle. Banded brief included.



ITTY BITTY PRETTY ONE **SP10A**

Baby pink sequin sweetheart top with pink and black lightly sparkled skirt over a bouncy black crinoline. Pink mystique provides all the finishing touches. Hair bow and banded brief included.



SUGAR AND SPICE **SP11A**

Sequin and mesh top with 3D flower lace puff sleeves and backskirt on a banded mystique brief and a bouncy back crinoline, all edged in pink, and finished with a bow. Hair bow included.



LUCKY ONE **SP12A**

Prism hologram and mystique in this puff sleeve, zip back banded bodysuit with backskirt over a bouncy back crinoline. Hair bow included



UPTOWN GIRL **SP13A**

Vibrant metallic print and mystique in this puff sleeve shrug with banded brief, backskirt and crinoline, pinch front top, all finished with a bow. Hair bow included.



BEAT OF MY HEART **SP14A**

Sequin and metallic heart print bodysuit and skirt over a full glitter crinoline and finished with a rhinestone heart buckle.



BEST OF ME **SP14B**

Prism hologram and mystique zip back bikertard with puff sleeve and double structured peplum. Hair bow included.





TRUE BLUE **SP15A**

Low shed glitter flocked lycra and mystique bikertard has mesh shoulders and sleeves and a double structured peplum. Hair bow included.



RAZZLE DAZZLE **SP16A**

Dazzling sequin jersey and mesh top and HW banded bottoms with 3D lace backskirt over black crinoline, finished with a bow.



AYE CARAMBA **SP16B**

Gold Sequin and sequin /coral fishnet sleeves, neckruffle and backskirt over a gold glitter crinoline.



BEACH PARTY

SP17A - YELLOW
SP17B - PINK

Polka dot double spaghetti strap top and banded brief/backskirt over bouncy crinoline and all trimmed out in mystique and finished with a bow. Hair bow included.



LEMON LIME

SP18A - NEON YELLOW
SP18B - LIME

Fringe dress on a softly metallic lycra. Banded brief included.



STAR OF THE SHOW

- SP19A - PURPLE
- SP19B - WHITE
- SP19C - RED

Black sequin bra top and banded brief, dotted mesh and mystique collared shrug with cuff and button detailing. The backskirt over crinoline has a bow to finish the story.



PAPARAZZI

- SP20A - RED**
- SP20B - TURQUOISE**
- SP20C - FUCHSIA**

Diamond mystique, mesh and mystique bodysuit with attached tattered two toned crinoline.



CONFIDENT SP21A

Sequin, mesh and velvet banded leg bodysuit with attached backskirt and crinoline.



IN CONTROL SP22A

Zip front bodice with side cutouts, attached to mystique mock jeans.



COUNTDOWN

- SP23A - PLUM
- SP23B - WHITE
- SP23C - BLUE
- SP23D - GREEN

Zip front bodice with side cutouts, attached to a mystique banded brief.



SALSA **SP24A**

Red mesh cross over top attached to a lycra pinch front bra top, paired with a banded brief with two rows of contrast fringe, all finished with a rhinestone buckle.



SHAKE SHAKE SHAKE **SP25A - RED**
SP25B - TURQUOISE
SP25C - PURPLE

Fringe crop top and banded brief, trimmed in black and finished with a rhinestone buckle.



FEELING GOOD **SP26A**

Diamond mesh over mystique bikertard, trimmed in mystique and two rows of fringe.



CELL BLOCK TANGO

SP27A - BLACK
SP27B - WHITE

Diamond mesh and mystique off shoulder pinch front bra top and HW banded brief.



IMAGINE SP28A

Colourful hologram print and coordinating velvet bikertard with mesh side detail.



QUEEN BEE

- SP29A - PURPLE**
- SP29B - RED**
- SP29C - GOLD**
- SP29D - EMERALD**

Mock leather and mystique lined lace zip back bodysuit with banded legline features lace ruffle detail.



FLY AWAY **SP30A**

Glitter velvet and mesh bodice attached to velvet leggings.



WIDE AWAKE **SP31A**

Metallic print and mesh attached to mystique leggings.



FORTNITE **SP32A**

Olive matte mystique and mesh zip front bodysuit with banded legline.



MERCY ME

SP33A - BEIGE
SP33B - BLACK

Multi colour sequin on beige or black background in this double spaghetti strap bra top and banded brief.



NO LIMITS

SP34A - PURPLE
SP34B - WHITE

Distressed mystique bodysuit with v chest insert of mystique and mesh shoulders and sleeves



ELECTRIC

SP35A - TURQUOISE
SP35B - RED

Mystique print bodice with mesh shoulders and sleeves attached to a high waisted mystique banded brief.



BLUE LIKE JAZZ **SP36A**

Crushed velvet and mesh in this turtleneck banded bodysuit with modest keyhole opening.



KEYS OF LIFE

SP37A - BLACK
SP37B - WHITE

Crushed velvet and mesh in this turtleneck banded bodysuit with modest keyhole opening.



NO REGRETS **SP38A**

Multi colour sequin on teal lycra in this turtleneck banded bodysuit with cutaway back detail.



HIGH VELOCITY **SP39A**

Multi colour sequin on black lycra pairs with black mesh and mystique in this highwaisted banded bodysuit.



COLLIDE

- SP40A - FOREST**
- SP40B - BROWN**
- SP40C - EGGPLANT**
- SP40D - NAVY**
- SP40E - GREY**

Tye dye mesh and lycra in this bodysuit that features a zip back and fully lined/banded brief.



HOLDING ON

- SP41A - BLACK**
- SP41B - BLUSH**
- SP41C - NAVY**
- SP41D - BURGUNDY**
- SP41E - CHARCOAL**
- SP41F - FOREST**

Bodysuit with fully lined mesh insert, lined and banded brief and modest keyhole back.



EYES ON FIRE **SP42A**

Burgundy mesh over fire hologram bodice attached to burgundy supplex lined and banded brief.



ALL OF ME

- SP43A - GREY
- SP43B - TEAL
- SP43C - PLUM
- SP43D - BLUSH

Elegant lace over mystique bodysuit with lace shoulders and sleeves has banded legline.



ALL TOO WELL **SP44A - TAUPE**
SP44B - BURGUNDY

Black lace over mystique in an asymmetrical bodysuit with banded legline and pinch front bra top.



WAITING GAME

- SP45A - RED**
- SP45B - TAUPE**
- SP45C - BLACK**

Crushed velvet turtleneck bra top and high waisted banded brief.



DAYLIGHT **SP46A**

Mystique ombre turtleneck bodysuit with beautiful cutaway back.



RISE UP

- SP47A - PURPLE**
- SP47B - ORANGE**
- SP47C - FUCHSIA**

Tye dye mesh and lycra in this bodysuit with 2 layer short backskirt.



IN THE GARDEN

SP48A

Floral print and peach mesh bodysuit with banded legline and 2 layer short backskirt.



ANGELS AMONG US **SP49A**

White/gold overwash lycra bodysuit with lace shoulders, back and short backskirt.



TIME TO SAY GOODBYE

SP50A

Tye dye slinky skirt and pinch front bra top with attached mesh crossover top. Lined and banded brief included.



YESTERDAY **SP51A**

Tye dye long skirt, slit on both sides and crossover top with attached eggplant lycra pinch front bra top. Lined and banded brief included.



WHAT WAS I MADE FOR SP52A

Eggplant sequin bra top with cutaway back paired with mesh leggings and attached banded brief.

FOR TODAY SP52B

Sequin, mesh and lycra in this bodysuit with banded legline, side cutouts and a 2 layer short backskirt.



EARTHBOUND **SP53A**

Soft print and sage mesh in this bodysuit with inserts and a 2 layer short backskirt



SOUNDS OF GRACE **SP54A**

Sage lace over beige lycra turtleneck bodysuit with banded legline, deep keyhole back and attached pleated chiffon backskirt.



WHEN I WAS OLDER

SP55A - BLACK
SP55B - WHITE
SP55C - RED

Lace over beige lycra in this bodysuit with banded legline, deep keyhole back and attached pleated chiffon backskirt.



FIRST LIGHT **SP56A**

Pinch front sequin lace tunic with attached bra top. HW lined and banded brief included.



UNFORGETTABLE **SP56B**

Navy lace over champagne mystique bodysuit, with banded legline.



PARADISE **SP57A**

Tropical print mesh with gold overwash dress features slits to the waist on both sides and a sage sweetheart bodysuit with banded legline attached. Please see page 51 for standing skirt length



YOUR WAY - SEPARATES

SP58A - WHITE TOP
SP58B - BLACK TOP
SP58C - RED TOP
SP58D - NAVY TOP
SP58E - FOREST TOP

SP58AA - WHITE BRIEF
SP58BB - BLACK BRIEF
SP58CC - RED BRIEF
SP58DD - NAVY BRIEF
SP58EE - FOREST BRIEF

Lycra pinch front bra tops and HW fully lined banded brief. All pieces are sold separately so you can achieve a look to fit your vision.

SP59A-E



SP59F-J



SP59K-O



YOUR WAY - SEPARATES



Lycra and mesh sweetheart bra top.
SP59A - WHITE SWEETHEART TOP
SP59B - BLACK SWEETHEART TOP
SP59C - RED SWEETHEART TOP
SP59D - NAVY SWEETHEART TOP
SP59E - FOREST SWEETHEART TOP

Lycra turtleneck top with keyhole back
SP59F - WHITE KEYHOLE TOP
SP59G - BLACK KEYHOLE TOP
SP59H - RED KEYHOLE TOP
SP59I - NAVY KEYHOLE TOP
SP59J - FOREST KEYHOLE TOP

Lycra top with mesh shoulders and 3/4 sleeve.
SP59K - WHITE MESH YOKE TOP
SP59L - BLACK MESH YOKE TOP
SP59M - RED MESH YOKE TOP
SP59N - NAVY MESH YOKE TOP
SP59O - FOREST MESH YOKE TOP

SP60A-C



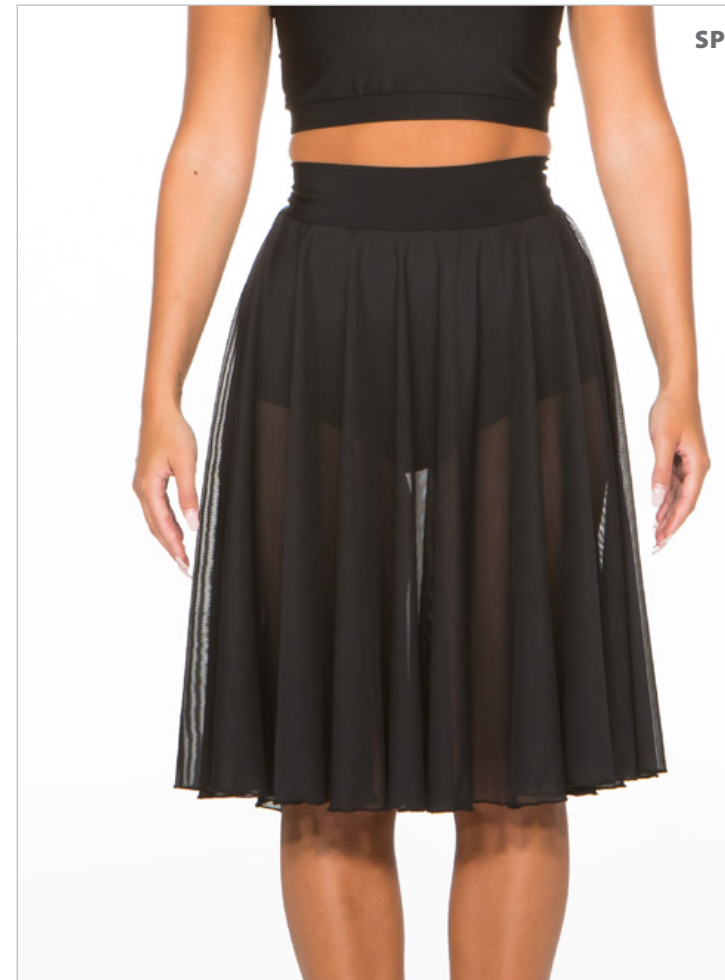
SP60D



SP60E



SP60F



MORE SEPARATES



SP60A - TURQUOISE
SP60B - RED
SP60C - PURPLE

Mystique tiger bra tops with cutaway back... they pair well with jeans, shorts or even joggers.

SP60D - Leatherette mock jeans.
SP60E - Mid thigh length mesh skirt on lycra waistband.
SP60F - Knee length mesh skirt on lycra waistband.



IT'S A GUY THING

- SP61A - SILVER**
- SP61B - GOLD**
- SP61C - RED**
- SP61D - BLACK**

SP61E - CLASSIC PANT

Sequin vests

Classic pant with stretch waist. Black only.

ORDERING INFORMATION

Spotlight Collection costumes can be ordered through our shopping carts or in person only.
Quantities are limited to what is in stock.

All designs are made in our Mississauga facility and will be completely in-stock by early January.
Groups added weekly...check our website for Current Inventory levels..

There are no backorders accepted for this collection and also no minimums, so they are a great option for solos and duets, as well as groups..

**We will accommodate size exchanges where available when requested in a timely manner.
Costumes must not be worn or altered in any way.**

**We do not accept returns on costumes
once they have been shipped.**

Please understand that all costume companies fit differently.
Do use the Jazzamatazz sizing guide to ensure a Jazzamatazz fit.
We offer 20 sizes in all our costumes to ensure a great fit.

A few tips for a great fit...

Lycra bodysuits will generally accommodate a few extra inches and should not be sized up.
Plus sizes are designed for dancers who have round proportions, not long girths.

Balances are due prior to shipping or pick up.

We charge a flat fee for shipping.

We charge 3% of your order (or a \$25 minimum) in Ontario
We charge 4% of your order (or a \$35. Minimum) outside of Ontario.

Please allow 5-10 days for the transport of your order, depending on distance and conditions.
Orders shipping to a PO Box can only ship Canada Post.

There is no ship charge for studios who choose to pick up from our facility.

If you have any questions at all, please reach out to a team member.
We are always happy to help.

CHILDREN'S SIZES - GIRL / BOY / UNISEX	Bust	Waist	Hip	Girth	Outseam
3-3X	19-21	18-21	20-22	34-36	22
4-5	21-23	20-21	22-24	36-39	24
6-6X	23-24	21-22	23-25	40-42	26
7-8	24-25	22-23	25-27	43-45	30
8-10	25-26	23-24	27-29	45-47	33
10-12	26-27	24-25	29-30	47-49	35
12-14	27-29	25-26	30-32	49-52	37
14-16	29-31	26-27	32-34	52-54	39

CHILDREN'S PLUS SIZES - GIRL / BOY / UNISEX	Bust	Waist	Hip	Girth	Outseam
7-8 PLUS	26.5-28	26.5-28	29-30	46-48	30
8-10 PLUS	27.5-29	27.5-29	30-32	49-51	33
10-12 PLUS	28.5-30	28.5-30	32-34	51-54	35
12-14 PLUS	29.5-32	29.5-30	34-36	54-57	37
14-16 PLUS	31.5-34	31.5-34	36-38	57-60	39
16-18 PLUS	34-37	34-37	38-41	60-63	40

ADULT SIZES- WOMEN / MEN / UNISEX	Bust	Waist	Hip	Girth	Outseam
X-Small	31-32.5	24-26	32-34	54-55	39
Small	32-34.5	25-28	34-36	55-58	40
Medium	35-37.5	27-30	36-39	58-61	41
Large	38-41	30-33	39-42	61-64	42
X-Large	41-43	33-36	42-45	64-66	43
XX-Large	43-46	36-40	45-48	66-69	43

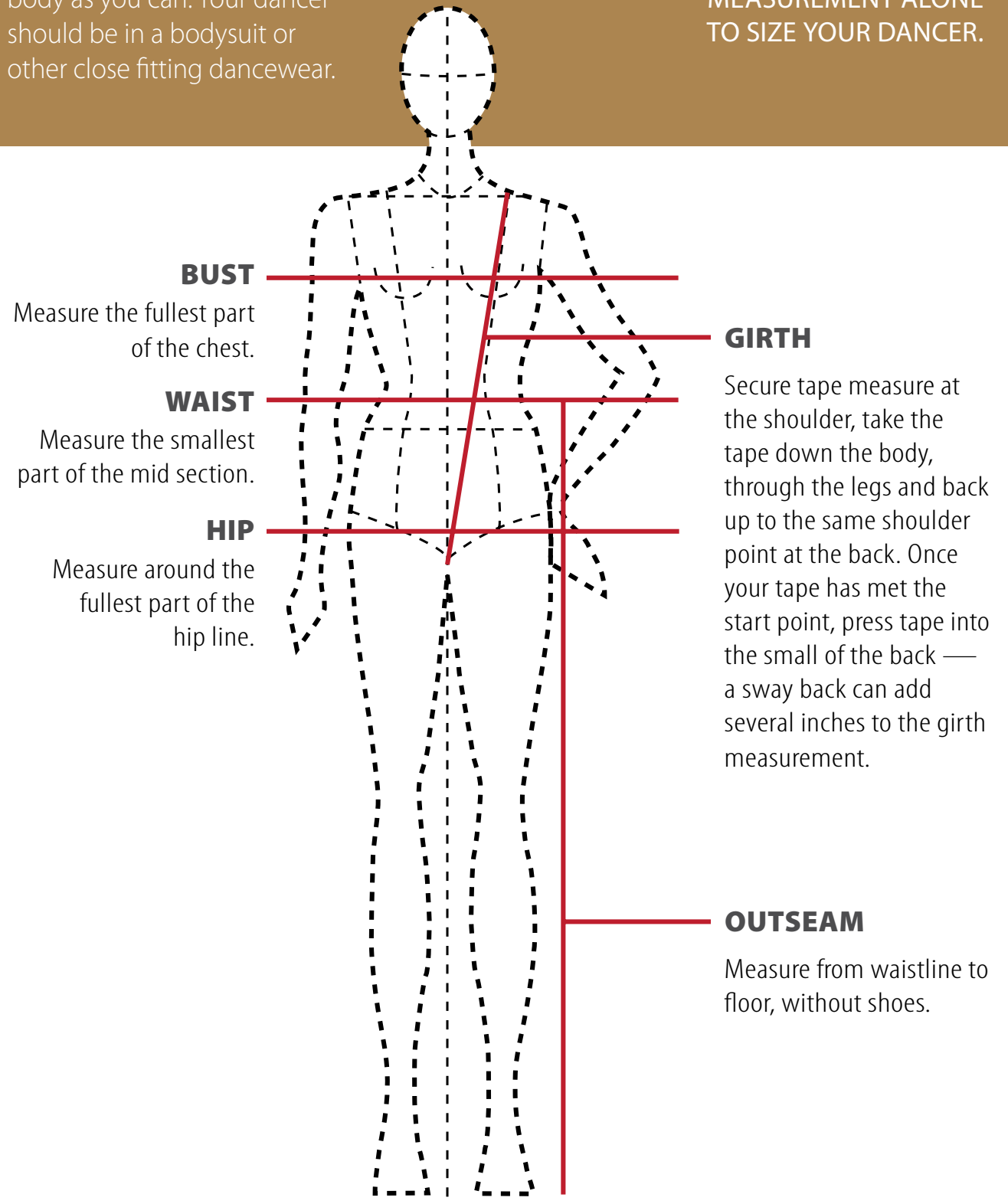
Please order the size that includes the majority of your dancer's measurements.

MEASURING TIPS

Always measure as close to the body as you can. Your dancer should be in a bodysuit or other close fitting dancewear.

A WORD ABOUT SIZING

NEVER USE THE GIRTH MEASUREMENT ALONE TO SIZE YOUR DANCER.





JAZZAMATAZZ
THE SPOTLIGHT COLLECTION

905-542-0605
www.costumesbyJazzamatazz.com