

JAZZAMATAZZ

The Express Collection



2026

Proudly made in
Canada for 36 years



JAZZAMATAZZ

The Express Collection

Grateful to be your **MADE IN CANADA** solution for over 35 years!

We are all thinking about how we can grow and support our own Canadian industries a little more these days. Since our very beginning, we have been 100% committed to our Canadian dance community. We do not sell outside of Canada. This choice has been intentional and part of what makes us who we are.

When we say we are Canadian, we don't just sell in Canada. Every single costume we sell is made right here in our Mississauga, Ontario facility with an unwavering commitment to quality. We hear from you that your dancers feel special and their parents notice the quality of the workmanship.



GLITTER! Love it or hate it...everyone has an opinion and we listen to you. As more and more theatres are charging a clean up premium for glitter, we are steadily moving towards a no glitter zone. The vast majority of our designs will bear the Glitter Free emblem. The few that don't are made with a very low shed glitter, embedded into the fabric so that you know up front what you are working with.



Combo Classes! We have some designs that will bear a Combo class ready emblem. They are either built on a bikertard with an additional piece or there is an optional piece offered to easily make them do double duty in a flash. A lot of our designs are made with a removable skirt or tutu. Ask us if you need an additional piece to bring your vision to life.

Thousands of our Express Costumes are in stock and ready to ship or pick up.

In our 10,000 square foot facility in Mississauga, we have dedicated Express Collection production lines! This means inventory is constantly being added to throughout most of the season. Check our website for current inventory levels.

From first recital steps to your senior students, the 2026 Collections are filled with fresh new designs across the disciplines, designs that stand alone or act as a perfect canvas for your creative embellishments.

We don't believe you have to choose between quality and value. We are a little obsessed with lining and banding but we hear you like that about us. Your dancers can step confidently onto the stage in a well made costume without breaking the bank!

We love hearing from you that your dancers and their parents are thrilled with their Jazzamatazz costumes. We know that leaves you free to focus on bringing your vision to life!

On behalf of the Jazzamatazz team, we feel privileged to know that many of our studio owners wore Jazzamatazz costumes when they were students themselves. We thank you for choosing our team to partner with your team to bring your vision to reality.

Here's to another great season together!

Tammy

Tammy Nancoo, Creative Director



LITTLE BALLERINAS 4



CHARACTERS 24



HIP HOP 92



ACRO 120



TAP & JAZZ 37

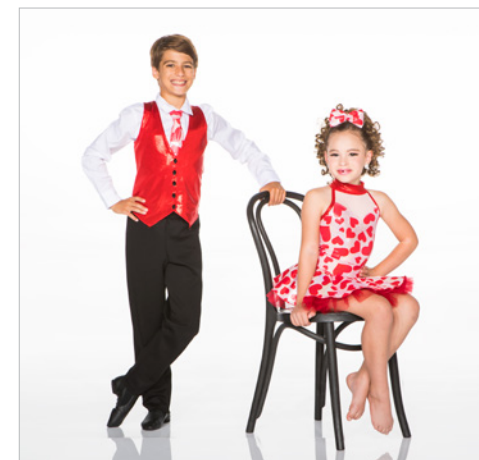
CONTENTS



CONTEMPORARY & LYRICAL 137



BALLET 158



LIMITED QUANTITIES 172



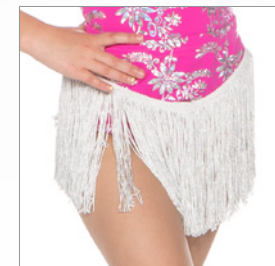
SUGAR PLUMS - X4A - LILAC • X4B - AQUA

Sweet baby doll dress with mystique bodice and sequin mesh puff sleeve and wide trim on attached organdy and tulle skirt. Bodysuit attached. Hairbow included



HAPPILY EVER AFTER - X5A - BOY/AQUA • X5B - GIRL/AQUA • X5C - BOY/CORAL • X5D - GIRL/CORAL

GIRLS: Baby doll dresses with hologram lycra print bodice, attached supplex bottom and attached tulle and organdy skirt, finished with an organza flower. Scrunchie included.
BOYS: Vests and bow ties in matching hologram lycra print and white classic pant. Dress shirt not included.



LOTUS BLOSSOM - X6A - GIRL - BODYSUIT/ROMANTIC TUTU VERSION • X6B - BOY • X6C - BABY DOLL VERSION • X6D - OPTIONAL FRINGE SKIRT

GIRL ON LEFT: Hologram lycra sweetheart bodysuit and separate tutu, trimmed out in hologram lycra trim. Scrunchie included. BOY: Silver mystique vest with hologram lycra bow tie and white pants. Dress shirt not included.
GIRL ON RIGHT: Hologram lycra baby doll dress with attached bottom and skirt, trimmed in hologram lycra trim. Scrunchie included. ADD an optional fringe skirt to turn X6A into a combo class costume!



DREAMWEAVER - X7A - GIRL • X7B - BOY • X7C - OPTIONAL CAPRI LEGGINGS

Soft hologram lycra print bodysuit with tri colour tutu on a waistband. Scrunchie included. Our boy is dressed in matching T-shirt and white pants. ADD an optional pair of capri leggings to our girl to make this costume combo class ready!



DELICATE - X8A - GIRL • X8B - BOY

GIRL: Sequin and soft lycra print make this bodysuit with flutter sleeve and tutu on a waistband a favourite. Scrunchie included. BOY: sequin vest, print bow tie and white classic pant. Dress shirt not included.



SOMEWHERE OVER THE RAINBOW - X9A - BABY DOLL VERSION • X9B - BODYSUIT AND TUTU VERSION

LEFT: Baby doll dress version with attached bottom and two layer tutu. RIGHT: Bodysuit with separate tutu on a high waistband. Scrunchie included with both.



BLOSSOM - X10A

Soft pink mystique bodysuit with low shed glitter neck ruffle and tutu on a separate waistband. Scrunchie included.



LOVE YOU FOREVER - X10B

Print lycra puff sleeve bodysuit with mystique collar and waistband for tutu, perfectly finished with print trim. Hair bow included.

**WALK WITH ME - X11A - BOY • X11B - GIRL**

BOY: Pink mystique vest, black cotton t-shirt and classic pant. GIRL: Pink mystique bodysuit with flocked, low shed tulle insert, sleeve and tutu on a separate waistband. Scrunchie included.



BUNDLES OF JOY - X12A - BOY/MINT • X12B - GIRL/MINT • X12C - GIRL/LILAC • X12D - BOY/LILAC

BOYS: Mystique vests in either mint or lilac with bubblegum bow ties and black classic pant. Dress shirt not included.

GIRLS: Mystique and sequin lace puff sleeve sweetheart bodysuits and separate tutu on waistband, trimmed in mystique ribbon.



PRINCESS PARTY - X13A-BLUE • X13B - YELLOW • X13C - LILAC • X13D - PINK

Mystique and lace puff sleeve sweetheart baby doll bodices with attached organza/tulle tutu, finished with a bow. Scrunchie included.



MUSIC BOX DANCERS - X14A - PINK • X14B - LILAC • X14C - AQUA

Velvet and lace sweetheart bodysuit with tutu on a separate waistband, all layers trimmed out in silver sequins. Scrunchie included.



LOVELY DAY - X15A - BLUE • X15B - GREEN • X15C - YELLOW • X15D - ORCHID

Silver mystique bodysuit with eyelet ruffle paired with a mid thigh eyelet/tulle tutu on a waistband. Scrunchie included.



MY FAVOURITE THINGS - X16A - BOY/LILAC • X12B - GIRL/BLUE • X16C - GIRL/LILAC • X16D - BOY/BLUE

BOYS: Low shed glitter flocked lycra with white cotton t-shirt and classic pant. GIRLS: Mystique and low shed glitter flocked lycra bodysuit with mid-thigh tutu on a waistband, trimmed in matching trim. Scrunchie included.



SPRING FLOWERS - X17A - BLUE • X17B - CORAL • X17C - AQUA • X17D - LILAC **INSET:** X17E - SKIRT/BLUE • X17F - SKIRT/CORAL • X17G - SKIRT/AQUA • X17H - SKIRT/LILAC

Lace and mystique spaghetti strap bodysuit with romantic tutu on a waistband. Scrunchie included. ADD an optional fringe skirt to make it combo class ready!



JOLLY HOLIDAY - X18A - GIRL • X18B - BOY

GIRL: Mystique and stripe puff sleeve bodysuit and romantic tutu on a separate waistband, trimmed in mystique stripe. Hair bow included. BOY: Mystique stripe vest and bow tie with classic pant. Dress shirt not included.

**ICE CASTLES - X19A - GIRL • X19B - BOY**

GIRL: Empire waist one shoulder bodysuit with metallic velvet bodice and attached organdy/ tulle skirt trimmed in silver sequins. Tiara included. BOY: Metallic velvet vest with white cotton t-shirt and classic pant.



COTTON CANDY - X20A - LILAC • X20B - PINK

Mystique bodysuit with tulle and multi colour sequin neck ruffle and bow. Mid-thigh tutu on a separate waistband features the same magical trim. Hair scrunchie included.

**HOLDING COURT - X21A - RED • X21B - YELLOW • X21C - PURPLE**

Velvet, off shoulder pinch front bodysuit with romantic tutu on a waistband, both trimmed out in gold sequin. Gold hair scrunchie included.



LOVE STORY - X22A - GIRL • X22B - BOY

GIRL: Hologram heart print pinch front bodysuit with mid-thigh tutu on separate waistband has matching trim. Hair bow included. BOY: Hologram heart print vest and mystique bow tie with white classic pant. Dress shirt not included.



SWEETHEART - X22C

Sweetheart baby doll dress in hologram heart print, pink mesh and mystique bottoms has attached organdy/tulle skirt, all finished with a bow. Hair scrunchie included.





FAIRY DUST - X23A

Iridescent mesh over lycra off shoulder pinch front bodysuit with tutu on separate waistband, trimmed in iridescent mesh. Hair scrunchie included.



BLUEBIRD - X23B

Royal mystique bodysuit with organdy tattered neck ruffle and tattered organdy/tulle tutu on separate waistband, trimmed in boa. Feather pouf hairpiece included.



CAN YOU FEEL THE LOVE TONIGHT? - X24A - GIRL • X24B - BOY

GIRL: Metallic velvet bodysuit with sequin and marabou belly detail with organza tutu and tail on separate waistband. Ears included.

BOY: Metallic velvet t-shirt with sequin and marabou belly detail and attached tail with matching shorts. Ears included.

**LADYBUG PICNIC - X25A - GIRL • X25B - BOY**

GIRL: Hologram polka dot bodysuit with attached wings and separate tutu, trimmed in matching print. Hairpiece included. BOY: Hologram polka dot vest with black cotton t-shirt and classic pant. Antenna included.



RUBBER DUCKY - X26A

Mystique puff sleeve bodysuit with organdy backskirt and boa attached finished with a sequin bow at neckline. Hairpiece included.



BUZZ BUZZ - X27A - GIRL • X27B - BOY

GIRL: Hologram stripe bodysuit with attached wings and backskirt in organdy trimmed in horsehair and finished with bows. Hairpiece included. BOY: Hologram striped vest with black cotton t-shirt and classic pant. Antenna included.



JUNGLE CATS - X28A - GIRL WITH TUTU • X28B - BOY • X28C - UNITARD

GIRL WITH TUTU: Soft animal print velvet bodysuit with sequin and marabou belly detail with tattered tutu and tail on a separate waistband. Ears included. BOY: Long sleeve t-shirt and contemporary capri in soft animal print velvet. T-shirt has sequin and marabou belly detail and tail attached. Ears included. UNITARD: Long sleeve capri length unitard in soft animal print velvet with sequin and marabou belly detail and attached tail. Ears included.

**HAPPY FEET - X29A - GIRL • X29B - BOY**

GIRL: Hologram long sleeve bikertard with tails and insert, finished with a sequin bow at neck. Hair piece included. BOY: Hologram vest with long tails and sequin bow tie with classic pant. Dress shirt not included.



IN THE JUNGLE - X30A - BOY • X30B - TUTU VERSION • X30C - BACKSKIRT VERSION

BOY: Tropical print t-shirt and coordinating shorts. TUTU: Tropical print one shoulder bodysuit with a tattered organdy tutu on a separate waistband. Scrunchie included.
BACKSKIRT: Tropical print one shoulder bodysuit with attached tattered backskirt and mystique bow. Scrunchie included.



UNDER THE SEA - X31A - BACKSKIRT VERSION • X31B - TUTU VERSION • X31C - UNITARD VERSION • X31D - BOY

BACKSKIRT: Sequin and shell print bodysuit with attached organza backskirt, trimmed in print and finished with a bow. Scrunchie included. TUTU: Sequin and shell print bodysuit with tutu on a separate waistband, trimmed in print and finished with a bow. Scrunchie included. UNITARD: Sequin and shell print capri length unitard. Scrunchie included. BOY: Shell print t-shirt and turquoise fleece shorts.



MOUSE IN THE HOUSE - X32A - MINNIE • X32B - MICKEY

MINNIE: Polka dot bodysuit with neck ruffle and skirt with pop of crinoline, all outlined in black. Ears with bow included. MICKEY: Polka dot vest with black pants and bow tie. Ears included. Dress shirt not included.



SEEING SPOTS - X32C

Polka dot and red mystique bikertard with large dotted bow accent. Hair scrunchie included.



PLENTY OF FISH IN THE SEA - X33A - BOY • X33B - GIRL

BOY: Rainbow shell print t-shirt and white fleece shorts GIRL: Rainbow shell print and sequin bodysuit with attached tattered two-toned organdy backskirt, finished with a sequin bow. Hair scrunchie included.



SHAKE A TAILFEATHER - X34A - LIME • X34B - PURPLE • X34C - TURQUOISE

Mystique and sequin bodysuit with coordinating tattered backskirt and feather boa trim attached. Feather hair pouf included.

**ROCKIN' ROBIN - X35A - GIRL • X35B - BOY**

GIRL: Mystique and mesh sweetheart bodysuit with attached organdy backskirt and feather boa trim. Feather hair pouf included. BOY: Mystique vest and necktie with black classic pant. Dress shirt not included.



INTO THE WOODS - X36A - GIRL • X36B - BOY

GIRL: Gingham bibbed dress with full crinoline over collared short sleeve bodysuit with keyhole opening. Scrunchie included. BOY: Forest lycra bibbed shorts with gingham t-shirt.



ANIMATED - X37A - GIRL/YELLOW • X37B - BOY/YELLOW • X37C - GIRL/RED • X37D - BOY/RED

GIRLS: Stretch denim bibbed dress with full crinoline and mystique short sleeve bodysuit. Scrunchie included. BOYS: Stretch denim bibbed shorts with mystique t-shirts.





ROLLER COASTER - X38A - BOY • X38B - POP OF CRINOLINE VERSION • X38C - FRINGE SKIRT VERSION • X38D - GIRL WITH SLIT SKIRT

BOY: Print t-shirt and black classic pants CRINOLINE: Sequin and print turtleneck halter bodysuit and skirt with pop of crinoline FRINGE SKIRT: Sequin and print turtleneck halter bodysuit and fringe skirt.
SLIT SKIRT: Sequin and print turtleneck halter bodysuit with slit skirt. Scrunchies included with all.



RIO - X39A - BACKSKIRT VERSION • X39B - BOY VERSION • X39C - POP OF CRINOLINE VERSION

BACKSKIRT: Pinch front, off shoulder bodysuit with attached backskirt and bow detail. Scrunchie included. BOY: Hologram print t-shirt and classic black pant.

CRINOLINE: Pinch front, off shoulder bodysuit with mystique skirt with a pop of crinoline. Scrunchie included.



IT TAKES TWO - X40A - GIRL • X40B - BOY

GIRL: Crushed velvet HW banded shorts with suspenders and silver hologram short sleeve top. Scrunchie included. BOY: Crushed velvet loose shorts with suspenders and silver hologram t-shirt.



I LIKE PINK - X41A

Sequin jersey and mystique sweetheart bikertard with puff sleeve has skirt on separate waistband, making this ideal for a combo class! Hair bow included.



WISHFUL THINKING - X42A - BOY • X42B - GIRL

BOY: Print t-shirt with white fleece shorts GIRL: Sequin and print bodysuit and skirt with pop of crinoline. Hair bow included.

**POPULAR - X43A**

Bubblegum mystique and iridescent mesh puff sleeve bodysuit with two layer skirt, trimmed in horsehair and finished perfectly with a bow. Hair bow included.



I WANNA DANCE WITH SOMEBODY - X44A - GIRL/PINK • X44B - GIRL/YELLOW • X44C - GIRL/BLUE • X44D - BOY

GIRL: Print and mystique turtleneck halter bodysuit and skirt with pop of crinoline. Hair scrunchie included. BOY: Print t-shirt and classic pant in black.



SING A HAPPY SONG - X45A - GIRL • X45B - BOY

GIRL: Sequin and print bodysuit and skirt with pop of crinoline. Hair bow included. BOY: Navy classic pant with suspenders attached and print tie. Dress shirt not included.



JAILHOUSE ROCK - X46A - BOY • X46B - GIRL

BOY: Colour blocked t-shirt and our classic pant in black. GIRL: Off shoulder colour blocked bodysuit and skirt with a pop of crinoline. Scrunchie included.

**HOT CHOCOLATE - X47A - BOY • X47B - GIRL**

BOY: Sequin vest, brown classic pant and copper mystique tie. Dress shirt not included. GIRL: Bikertard with sequin bodice, mystique booty shorts and peplum attached, finished with big sequin bow. Sequin hair bow included.



PICNIC IN THE PARK - X48A - GIRL/BLUE • X48B - BOY/BLUE • X48C - GIRL/LILAC • X48D - BOY/LILAC • X48E - GIRL/PINK • X48F - BOY/PINK

GIRLS: Gingham bodysuit and skirt, trimmed in mystique and accented with a pop of crinoline. Hair bow included. BOYS: Gingham t-shirts and white fleece shorts.



CAN'T STEAL MY SUNSHINE - X49A - POP OF CRINOLINE VERSION • X49B - FRINGED DRESS VERSION • X49C - BOY

CRINOLINE: Print turtleneck bodysuit and skirt with pop of crinoline, all trimmed out in mystique. Scrunchie included.

FRINGED DRESS: Print and mystique dress with fringed skirt bottom. Brief and scrunchie included. BOY: Print collared shirt and black classic pant.



BAM BAM - X50A - LIME • X50B - ORANGE • X50C - HOT PINK • X50D - BOY

GIRLS: Black and white print/bright sequin off shoulder bodysuit and skirt with a pop of colourful crinoline. Scrunchie included. BOY: Black and white print t-shirt and our classic pant in black.

**ROAR - X51A - BOY • X51B - GIRL**

BOY: Velvet animal print, mystique trimmed t-shirt with black classic pant. GIRL: Velvet animal print, mystique trimmed bodysuit and tattered skirt with pop of crinoline



DANCING IN THE STREETS - X52A - ORANGE • X52B - LIME • X52C- PINK • X52D - BOY

GIRLS: Metallic print and sequin bikertards with removable fringe skirt makes this perfect for combo classes! BOY: Metallic print and black t-shirt with classic black pant.



HAPPY HEARTS - X53A - BIKERTARD VERSION • X53B - SKIRT VERSION

Sweet coral mystique and heart print in either a banded bikertard with structured peplum or bodysuit and skirt with a pop of crinoline. Scrunchie included.



HOLIDAY - X54A - GIRL • X54B - BOY

GIRL: Tropical print banded bikertard with iridescent mesh off shoulder ruffle has lime green backskirt, finished with a bow. Scrunchie included. BOY: Tropical print t-shirt and our classic pant in black.



SURF'S UP - X55A - GIRL/ROYAL • X55B - GIRL/YELLOW • X55C - BOY

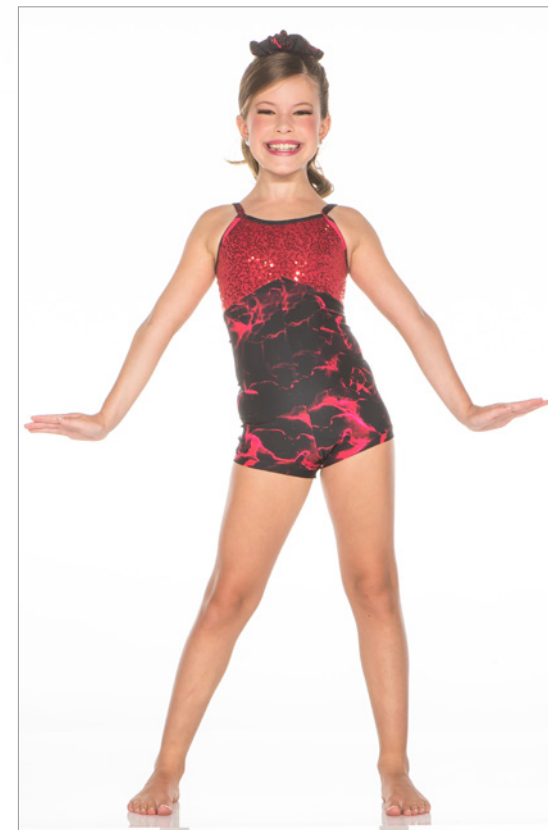
GIRLS: Tropical print and mystique in high waisted booty shorts paired with a tie back top. Scrunchies included. BOY: Tropical print tank top and fleece shorts with a print insert down the side.



NEON SIGNS - X56A - GIRL ON LEFT/SKIRT WITH POP OF CRINOLINE VERSION • X56B - BOY • X56C - FRINGE SKIRT VERSION

GIRLS: Double strap sequin and print bikertards, paired with either a skirt with pop of crinoline or a fringe skirt. The bikertard makes this a perfect choice for combo classes. Scrunchie included. BOY: Print t-shirt and black classic pants



**DID I MENTION? - X57A - BLUE • X57B - RED**

Sequin and print bikertard with removable fringe skirt makes this perfect for combo classes! Scrunchie included.





STARS IN MY EYES - X58A - BOY • X58B - GIRL

BOY: Mystique star print vest and tie with navy pant. Dress shirt not included. GIRL: Sequin and mystique star print bodysuit and skirt with pop of crinoline. Hair scrunchie included.



LET'S DANCE - X59A - GREEN • X59B - ROYAL • X59C - FUCHSIA • X59D - GOLD • X59E - BOY

GIRLS: Foil print and sequin bodysuit with attached backskirt, trimmed in horsehair and finished perfectly with a large bow. Sequin hair bow included. BOY: Foil print vest and necktie with classic black pant. Dress shirt not included.



I WANT CANDY - X60A

Great for combo classes! Confetti sequins, mesh and fully lined mystique shorts can stand alone. Add the included horsehair trimmed two layer skirt, finished to perfection with a bow and it is even more stunning! Sequin hair bow included.

**COCO LOCO - X61A - PINK • X61B - LIME**

Sequin and print bikertard with attached structured peplum for maximum impact. Scrunchie included.



SHINE ON - X62A - GIRL/SILVER • X62B - GIRL/TURQUOISE • X62C - GIRL/GOLD • X62D - GIRL/RED • X62E - BOY/RED • X62F - BOY/SILVER

GIRLS: Hologram colour blocked bikertards with peplum. Scrunchie included. BOYS: Hologram colour blocked t-shirt and black fleece shorts.



CAUGHT UP - X63A - GIRL/GREEN • X63B - BOY/PURPLE • X63C - GIRL/PURPLE • X63D - BOY/GREEN

GIRLS: Print and mystique one shoulder bikertard with asymmetrical peplum. Scrunchie included. BOYS: Print t-shirt with mystique accent and classic black pant.





HIGH ENERGY - X64A - TURQUOISE • X64B - PINK • X64C - GREEN

Prism hologram lycra and mystique in this banded bikertard with peplum and double straps. Scrunchie included.

**I GOT YOU - X65A - GIRL • X65B - BOY**

GIRL: One shoulder sequin and print bikertard with asymmetrical peplum accented with print banding and attached booty shorts. Scrunchie included. BOY: Print t-shirt and black fleece shorts.



JELLY BEANS - X66A - PURPLE • X66B- LIME • X66C- ORANGE • X66D- YELLOW • X66E- PINK • X66F - TURQUOISE • X66G- BOY

GIRLS: Polka dot print bodice and peplum with mystique attached shorts and banding. Scrunchie included. BOY: Print t-shirt and fleece shorts.



GIRLS JUST WANNA HAVE FUN - X67A - PINK • X67B - ORANGE • X67C - YELLOW • X67D - LIME • X67E - TURQUOISE • X67F - PURPLE

Polka dot print bodysuit and coordinating crinoline skirt, accented in mystique. Scrunchie included.



SISTER SISTER - X68A - GREEN • X68B - PURPLE

Print turtleneck halter bodysuit and skirt with pop of crinoline, both accented in mystique. Scrunchie included.



IT'S MY PARTY - X69A - GIRL/GOLD • X69B - GIRL/TURQUOISE • X69C - GIRL/BLACK • X69D - GIRL/ROYAL • X69E - GIRL/RED • X69F - GIRL/SILVER • X69G - BOY/RED • X69H - BOY/BLACK

GIRLS: Hologram off shoulder pinch front bodysuit and skirt with pop of crinoline. Scrunchie included. BOYS: Hologram vest and tie with our classic pant in black. Dress shirt not included.



LUCKY STAR - X70A - GIRL/PINK • X70B - GIRL/LIME • X70C - GIRL/TURQUOISE • X70D - BOY **INSET: X70E - PINK FRINGE • X70F - LIME FRINGE • X70G - TURQUOISE FRINGE**

Colourful star print bodysuit with double straps and crinoline skirt, accented in mystique. Scrunchie included. ADD optional fringe skirt for combo classes! BOY: Print t-shirt and classic black pant.

**SODA POP - X71A - LIME • X71B - FUCHSIA • X71C - TURQUOISE • X71D - ROYAL • X71E - ORANGE**

Capri Length unitard with print bodice and peplum with mystique bottoms and banding. Scrunchie included.



WILD WEST - X72A - SKIRT VERSION • X72B - UNITARD VERSION

SKIRT: Off Shoulder foil print bodysuit with fringe accent and skirt with pop of crinoline, all accented in mystique. Scrunchie included.

UNITARD: Off Shoulder foil print bodice attached to mystique capri leggings with fringe on outseams, accented with mystique and a rhinestone buckle. Scrunchie included.



BORN TO BE WILD - X73A - CRINOLINE SKIRT VERSION • X73B - FRINGE SKIRT VERSION • X73C - BOY

GIRLS: One shoulder print bodysuit, offered with a crinoline skirt or a fringe skirt. Scrunchie included. BOY: Print and mystique t-shirt with classic black pant.



START YOUR ENGINES - X74A - GIRL/YELLOW • X74B - GIRL/RED • X74C - GIRL/GREEN • X74D - BOY/BLUE

GIRL: Mystique and checkerboard bikertard with structured peplum. Hair scrunchie and half gloves included. BOY: Mystique and checkerboard side insert jacket, white t-shirt and black pants.



GO TEAM - X75A - GIRL/PURPLE • X75B - BOY/PURPLE • X75C - BOY/GREEN • X75D - GIRL/GREEN

GIRLS: Mystique dresses with attached shorts and gold/white accents. Gold hair bow included. BOYS: Lycra jersey and ball shorts with white/gold accents and number.



ROCK AROUND THE CLOCK - X76A - GIRL • X76B - BOY

GIRL: Black keyhole bodysuit with red collar and cuffs with polka dot knee length skirt and crinoline. Hair tie included. BOY: Varsity jacket with white cotton t-shirt and our classic pant in black.



GREASE IS THE WORD - X77A - GUY • X77B - GIRL WITHOUT JACKET • X77C - GIRL WITH JACKET

BOY: Black leatherette bomber jacket, white cotton T and classic black pant .

GIRLS: Off shoulder pinch front bodice attached to mystique capri leggings, accented with a rhinestone buckle. The unitard is offered with and without the hot pink satin bomber jacket.



GO GO - X78A - GIRL/FUCHSIA • X78B - GIRL/BLACK • X78C - GIRL/TURQUOISE • X78D - BOY

GIRLS: Banded bikertards with print bottom and fringe trimmed mystique top. Scrunchie included. BOY: Print t-shirt and our classic pant in black.



GROOVY - X79A - GIRL/PINK • X79B - GIRL/LIME • X79C - BOY

GIRLS: Fringed mystique tank top and print flare pants. BOY: Print collared shirt and classic black pants.



PUTTIN' ON THE RITZ - X80A

Bikertard features sequin and mesh bodice, sequin tails, velvet shorts and mystique finishing details.



TUXEDO JUNCTION - X81A - SILVER • X81B - GOLD

Hologram unitard with black bottom and banding is offered in silver or gold bodice and tails.



ROCK STEADY - X82A - GIRL • X82B - GUY

GIRL: Hologram print bodice attached to black mystique bike shorts. GUY: Hologram print sleeveless t-shirt and our classic pant in black.



WE WILL ROCK YOU - X83A- TEAL • X83B - SILVER

Sequin mesh cropped t-shirt over mystique tank top with pleather flare pants.





HIGHER GROUND - X84A - CORAL • X84B - TEAL

Iridescent mesh bodice and side detail with attached mystique booty shorts and separate bra top included.



FIREWORK - X85A - BOOTY SHORT VERSION • X85B - FLARE PANT VERSION • X85C - SLIT SKIRT AND BRIEF VERSION

Brilliant multi colour sequin tie back top is offered with high-waisted booty shorts, flare pants or a slit skirt with brief.



CHOO CHOO CHABOOGIE - X86A - GUY • X86B - GIRL

GUY: Plaid classic pant and vest with lycra back and lycra necktie. Dress shirt not included. GIRL: Puff sleeve collared bodysuit with modest keyhole back paired with a knee length plaid skirt.

**JUMP JIVE AND WAIL - X87A- GUY • X87B - GIRL**

GUY: Navy classic pant and vest with polka dot tie. Dress shirt not included. GIRL: Collared bodysuit with modest keyhole opening and knee length skirt on waistband, all accents in gold.



STEAM HEAT - X88A - GIRL • X88B - GUY

GIRL: Mystique and diamond mesh banded bikertard with two rows of 9" red fringe. GUY: Diamond mesh shirt with mystique tank top underneath and our classic pant in black.

**FEVER - X89A - GUY - X89B - GIRL**

GUY: Red sequin jersey vest and necktie with classic black pant. Dress shirt not included. GIRL: Red sequin jersey and mesh dress with attached black lycra bodysuit.



LIGHTNING STRIKES - X90A - GIRL • X90B - GUY

GUY: Mystique print vest with mystique tie and our classic pant in navy. GIRL: Mystique print and mesh sweetheart turtleneck bodysuit with attached emerald backskirt and finished with a bow.

**MY WAY - X91A - GIRL • X91B - GUY**

GIRL: Metallic turtleneck dress with side slits has attached black lycra bodysuit GUY: Metallic vest and tie with classic black pant. Dress shirt not included.



WALK THIS WAY - X92A - GUY/UNISEX • X92B - GIRL

GUY/UNISEX: Sequin mesh and leatherette hoodie with classic joggers. Cotton T-shirt included. GIRL: Sequin mesh and leatherette cropped t-shirt and leatherette skirt over black lycra bodysuit



STAR CHILD - X93A - GUY/UNISEX • X93B - GIRL/TURQUOISE • X93C - GIRL/LIME • X93D - GIRL/PINK

GUY: Star print pullover hoodie with side insert joggers GIRLS: Star print micro hoodie, mystique tank top and side insert joggers.



DYNAMITE - X94A - GIRL/TURQUOISE • X94B - GIRL/PINK • X94C - GUY/UNISEX

GIRLS: Mystique capri unitard with sequin jersey/mystique cropped t-shirt, with a two layer skirt, all trimmed in horsehair. Great for combo classes! BOY: Sequin jersey/mystique colour block t-shirt with classic black joggers.



IT'S GONNA BE ME - X95A - GUY/UNISEX • X95B - GIRL

GUY: Print and mystique scoop T-shirt and side insert joggers. GIRL: Print and mystique cropped T-shirt over mystique tank top paired with side insert joggers.



SKITTLES - X96A- BOY • X96B - GIRL/LILAC • X96C - GIRL/LIME • X96D - GIRL/CORAL • X96E - GIRL/TURQUOISE

BOY: Mystique t-shirt and fleece shorts with mystique side insert. GIRLS: Cropped mystique t-shirt with white tank top and white fleece shorts with mystique side insert.



SUMMER VIBES - X97A - GIRL • X97B - GUY/UNISEX

GIRL: Tye dye slinky and mystique cropped t-shirt over mystique tank top with fleece shorts. GUY/UNISEX: Tye dye slinky and mystique scooped t-shirt with fleece shorts.



WILD ONES - X98A - GIRL • X98B - GUY/UNISEX

GIRL: Bikertard has animal print top and black banded booty short bottom with a HW skirt and a pop of crinoline. Combo class ready! BOY: Colour blocked t-shirt and classic joggers.



CONCRETE JUNGLE - X99A - GUY/UNISEX • X99B - GIRL

GUY/UNISEX: Varsity jacket and side insert joggers with turquoise fleece and sequin animal print. Cotton T-shirt included.

GIRL: Varsity jacket and side insert joggers with turquoise fleece and sequin animal print with black supplex tank top.



HIGH SCHOOL HEROES - X100A - GIRL • X100B - GUY/UNISEX

GIRL: Gold cracked ice tank top under white fishnet cropped t-shirt paired with side insert fleece shorts GUY/UNISEX: Gold cracked ice scoop t-shirt under white fishnet scoop tank, paired with side insert fleece shorts.



THIS IS IT - X101A - GIRL/BRA TOP • X101B - GUY VERSION • X101C - GIRL/TANK TOP

GIRLS: Black fishnet micro hoodie and side insert joggers with either bra top or tank top GUY: Gold cracked ice scoop t-shirt under black fishnet scoop tank with side insert joggers.





ALL I DO IS WIN - X102A - GIRL /MAGENTA • X102B - GIRL/WHITE • X102C - GIRL/TEAL • X102D - GUY/UNISEX

GIRLS: Long sleeve gold hologram crop tops and side insert joggers. GUY: Gold hologram t-shirt and side insert joggers.



**GOOD VIBES - X103A - GUY/UNISEX • X103B - GIRL**

GUY/UNISEX: Print scoop t-shirt with classic joggers in turquoise. GIRL: One shoulder tank top in print with classic joggers in turquoise





SLITHER - X104A - GIRL WITH JOGGERS • X104B - GUY/UNISEX • X104C - GIRL WITH BRA TOP/LEGGINGS

GIRL ON LEFT: Snake print tank top with black fishnet micro hoodie and black classic fleece joggers GUY: Snake print scoop t-shirt with black fishnet sleeves and classic fleece joggers.
GIRL ON RIGHT: Snake print T-back bra top and HW leggings with black fishnet micro hoodie.



STONE COLD - X105A - GUY/UNISEX • X105B - GIRL/TANK TOP • X105C - GIRL/BRA TOP

GUY/UNISEX: Print/Leatherette varsity jacket with leatherette scoop t and classic fleece joggers. GIRL/TANK TOP: Print/Leatherette varsity jacket with leatherette tank top and classic fleece joggers.

GIRL/BRA TOP: Print/Leatherette varsity jacket with leatherette bra top and classic fleece joggers.



SORRY, NOT SORRY - X106A - GIRL • X106B - GUY/UNISEX

GIRL: Metallic print/white varsity jacket with white tank top and classic fleece joggers. GUY/UNISEX: Metallic print/white varsity jacket with white cotton t-shirt and classic fleece joggers.



FAM JAM - X107A - GIRL/BRA TOP • X107B - GIRL/TANK TOP • X107C - GUY/UNISEX

GIRLS: Stretch fleece micro hoodie and shorts with either gold hologram bra top or tank top. GUY/UNISEX: Stretch fleece shorts and classic hoodie with gold hologram hood.



MY HOUSE - X108A - GUY/UNISEX • X108B - GIRL

GUY/UNISEX: Red mystique scoop t-shirt, white fishnet scoop tank and side insert joggers. GIRL: Red mystique tank top, white fishnet cropped t-shirt and side insert joggers.



HIP HOP HURRAY - X109A - GIRL/PURPLE • X109B - GIRL/RED • X109C - GUY/UNISEX

GIRLS: Silver/white varsity jackets with side insert joggers and tank tops in either purple or red. GUY/UNISEX Silver/ white varsity jacket with silver/white side insert joggers and white cotton T-shirt



TRUE NORTH - X110A - GIRL • X110B - GUY/UNISEX

GIRL: White fleece/red mystique side insert jacket and joggers with red mystique bra top GUY/UNISEX: White fleece/red mystique side insert jacket and joggers with red mystique scoop t-shirt



STRONG AND FREE - X111A - UNISEX STYLE WITHOUT MAPLE LEAF • X111B - UNISEX STYLE WITH MAPLE LEAF

White fleece and red mystique unisex hoodie and side insert joggers is available with or without the maple leaf



THE BATTLE - X112A - GUY/UNISEX • X112B - GIRL

GUY/UNISEX: Camouflage scoop T-shirt and charcoal classic fleece joggers. GIRL: Zip front long sleeve bodysuit and charcoal classic joggers.

**BAD - X113A - GIRL • X113B - GUY/UNISEX**

GIRL: Sequin and fleece varsity jacket with pinstripe tank top and classic joggers. GUY/UNISEX: Sequin and fleece varsity jacket with black cotton t-shirt and classic joggers.





BOUNCE BACK - X114A- GIRL • X114B - GUY/UNISEX

GIRL: Varsity jacket with side insert joggers and black texture print tank top. GUY/UNISEX: Varsity jacket with side insert joggers and black texture print scoop t-shirt.

**CRAZY IN LOVE - X115A - GIRL • X115B - GUY/UNISEX**

GIRL: Lycra zip front bodysuit with red stretch fleece boyfriend joggers. GUY/UNISEX: Red stretch fleece hooded scoop vest, black cotton t-shirt and black stretch fleece joggers.



IT'S POPPIN' - X116A - MAGENTA • X116B - TEAL

Silver hologram biker tard with fleece and hologram cropped hoodie



GOOD DAY - X117A- BLUSH • X117B - BLUE • X117C - GREEN

Unisex hip hop look features tie dye fleece joggers with mystique side insert and pullover hoodie with mystique hood and accents.



STRAIGHT UP FIRE - X118A - GUY/UNISEX • X118B - GIRL

GUY/UNISEX: Black fleece track suit with fire inserts down sleeves and side of pants with metallic fire print scoop t-shirt. GIRL: Black fleece track suit with fire inserts down sleeves and side of pants with metallic fire T-back bra top.



BURN IT UP - X119A - GIRL • X119B - GUY/UNISEX

GIRL: Fire print tank top and side insert joggers with black fishnet cropped t-shirt. GUY/UNISEX: Fire print scoop t-shirt and side insert joggers with black fishnet scoop tank.



EVERYTHING EVERYWHERE - X120A - ROYAL • X120B - GOLD • X120C - SILVER • X120D - RED

Zip Back turtleneck bikertard with banded legline.



MASTERMIND - X121A - GOLD • X121B - RED • X121C - ROYAL • X121D - SILVER

Hologram and black lycra with mesh stomach insert in this full length, double spaghetti strap unitard





GHOSTS - X122A - GIRL • X122B - GUY

GIRL: Print one shoulder asymmetrical unitard. GUY: Print contemporary tank with black contemporary capri



DESCENDANTS - X123A - BLUE • X123B - RED

Unitard with mesh and pleather bodice attached to print leggings, finished with print banding.



YOU'RE WELCOME - X124A - LIME • X124B - PURPLE

Colourful metallic floral print capri unitard with sequin bodice. Scrunchie included.



KALEIDOSCOPE - X125A

Print and sequin in this asymmetrical unitard.



JUNGLELAND - X125B - BOY • X125C - GIRL

BOY: Contemporary Tank in print and black contemporary capri GIRL: Print and sequin capri length unitard



SPARKS FLY - X126A

Double strap unitard with multi colour sequin bodice and dynamic Lycra print bottom and accents. Scrunchie included



SHOWTIME - X127A - BLACK • X127B - COPPER

Double spaghetti strap unitard with mesh insert and sequin bodice attached to mystique leggings.



RENEWAL - X128A

Metallic tie dye print turtleneck bodysuit with banded legline and deep keyhole back.

**NO FEAR - X129A - GIRL • X129B - GUY**

GIRL: One shoulder asymmetrical print unitard with mystique trim. Scrunchie included. GUY: Contemporary tank and olive contemporary capris.



SMOKE ON THE WATER - X130A - GIRL • X130B - GUY

GIRL: Metallic print and black sequin in this double spaghetti strap unitard. Scrunchies included GUY: Metallic print contemporary tank and black contemporary capri.



WATER WORLD - X131A - ROYAL • X131B - AQUA

Mystique and print capri length unitard with double straps. Scrunchie included.



THE CLIMB - X132A - NAVY • X132B - FOREST • X132C - BLACK

Mystique unitard with fully lined mesh insert and small keyhole back

**GRAVITY - X133A**

Print and purple mystique turtleneck keyhole unitard with print inserts on legs.





AMETHYST - X134A

Purple velvet and mesh over hologram bodice in this full length unitard



FIRE AND ICE - X135A - GREY • X135B - RED

Sequin lace and velvet capri length unitard with a deep keyhole back and velvet spaghetti strap bra top



FATHOMS BELOW - X136A - UNITARD VERSION

Turtleneck keyhole unitard in navy mystique and hologram print.



FATHOMS BELOW - X137A - BODYSUIT VERSION • X137B - MALE VERSION

CONTEMPORARY BODYSUIT VERSION: Turtleneck keyhole contemporary bodysuit with banded legline. MALE VERSION: Contemporary tank in Fathoms Below hologram and navy supplex contemporary capri.



WILD WORLD - X138A - BROWN • X138B - OLIVE

Printed mesh scoop T-shirt over black mystique bra top and bike shorts.





UNTAMED - X139A

Leopard print semi sheer unitard over brown Lycra bra top and contemporary brief.



WHEREVER YOU GO - X140A - GIRL • X140B - GUY

GIRL: Textured mesh tunic dress over charcoal lycra bodysuit with banded leg. GUY: Textured mesh contemporary tank with front lined in charcoal lycra paired with contemporary capri in charcoal.



TRIBAL - X141A - GIRL VERSION • X141B - GUY VERSION

GIRL: Copper and mesh banded bodysuit under print jersey full pant GUY: Contemporary Tank in print and mystique with brown classic pant



BEFORE YOU GO - X142A

Supplex and mesh in this banded bodysuit with double mesh backskirt.



UNWRITTEN - X143A - WHITE • X143B - RED • X143C - BLACK

Crushed velvet loose pant with lace crop top over mystique bra top.



THE CHAIN - X144A - PURPLE • X144B - NAVY • X144C - RED • X144D - BLACK • X144E - WHITE

Velvet and lace slip dress with built in banded bodysuit.



ALL I ASK - X145A - GREEN • X145B - PINK • X145C - NAVY • X145D- RED • X145E - PLUM • X145F - BLACK

Soft twinkle velvet is very low shed, features mystique double straps and a lycra bodysuit attached .



EXILE - X146A - GIRL • X146B - GUY

GIRL: Metallic print bodice with fully lined mesh insert and small keyhole back, attached to mystique banded bottoms. GUY: Metallic print contemporary tank and black contemporary capris.



EARTHBOUND - X147A - GUY • X147B - GIRL

GUY: Contemporary tank in print with black contemporary capris GIRL: Print and mesh dress with attached lycra brief.



ALWAYS MIDNIGHT - X148A

Navy sequin lace tunic with navy Lycra contemporary bodysuit with banded legline.



SPANISH NIGHTS - X148B

Red sequin lace tunic dress with black trim and black pinch front tank bodysuit with banded legline.



THIS GIRL IS ON FIRE - X149A - SKIRT VERSION • X149B - PANT VERSION

Soft metallic bodysuit with cap sleeve and small keyhole opening is paired with a knee length skirt or a wide pant in coordinating jersey.



TURNING TABLES - X150A - GUY • X150B - GIRL

GIRL: Printed jersey dress with charcoal collar and attached brief. GUY: Charcoal vest and pant with printed jersey tie. Dress shirt not included.



LET YOUR LIGHT SHINE - X151A

Collared bodysuit with small keyhole opening with knee length skirt, both with mystique accents. Scrunchie Included



WHEN I DREAM - X151B

Soft twinkle velvet is very low shed and pairs with sparkled mesh in this dress with lycra brief attached.



MORNING HAS BROKEN - X152A

Print jersey dress with built in lycra bodysuit and banding flows beautifully.



CASTLE ON A HILL - X153A - GREY • X153B - PEACH

Sequin lace dress with attached mystique bodysuit with banded legline





THE RIVER - X154A - GIRL • X154B - GUY

GIRL: Tye dye slinky dress with small keyhole back and attached skirt and banded brief. GUY: Tye dye slinky contemporary tank with black contemporary capris.



SING THE BLUES - X155A

Dress with small keyhole back, banded leg brief and mid-thigh attach skirt



MONET - X155B

Soft lycra print dress has cap sleeve, pinch front and attached brief.



COLOURS OF THE WIND - X156A - SHORTER SKIRT VERSION • X156B - KNEE LENGTH VERSION

Soft print dress has hologram double straps and attached brief. It is offered in a shorter length as well as knee length. Scrunchie Included



MAKE A WISH - X157A - ORCHID • X157B - GREEN • X157C - YELLOW • X157D - BLUE

Soft metallic print bodysuit with eyelet ruffle and knee length eyelet skirt, both accented in mystique.



MAGICAL - X158A - AQUA • X158B - LILAC

One shoulder mystique bodysuit with sequin mesh puff sleeve and wide trim at the hem of a romantic tutu on a separate waistband. Hair bow included.



SOMEWHERE OUT THERE - X159A - TURQUOISE • X159B - PURPLE • X159C - PINK

Metallic lycra pinch front bodysuit and romantic tutu on a separate waistband, trimmed in metallic lycra ribbon. Scrunchie included.



CLIMB EVERY MOUNTAIN - X160A

Velvet bodysuit with embroidered lace insert and puff sleeve, also has a 3-layered skirt on a high waist band. Hair scrunchie included.



WALK IN THE GARDEN - X160B

Lycra bodysuit with embroidered mesh neck ruffle and trim on romantic tutu on a separate waistband.



MIDNIGHT IN THE GARDEN - X161A - FUCHSIA • X161B- FOREST

Mystique off shoulder bodysuit with tulle/sequin mesh ruffle and romantic tutu, trimmed in sequin mesh on a separate waistband. Scrunchie included.



THE GARDEN - X162A - FUCHSIA • X162B- EMERALD • X162C- PURPLE

Sequin lace and crushed velvet bodice in this ballet dress with lycra brief and with attached romantic tutu, finished with black lace trim and a white organza flower. Scrunchie Included



REGAL - X163A - BLACK • X163B - GOLD • X163C - RED • X163D - WHITE

Crushed velvet pinch front bodysuit with flounced sleeve. Peplum and romantic tutu are on a separate waistband.





BUTTERFLY - X164A

Beautiful metallic print pinch front bodysuit and tri colour mid thigh tutu on a separate waistband. Scrunchie included.



WHIMSICAL - X164B

Metallic lycra pinch front bodysuit and romantic tutu on separate waistband is trimmed in matching printed ribbon. Scrunchie included.



ETHEREAL - X165A

Iridescent mesh over lycra off shoulder pinch front bodysuit with romantic tutu on separate waistband, trimmed in iridescent mesh. Scrunchie included.



LAVENDER FIELDS - X165B

Hologram lycra bodysuit and peplum on separate waistband floats over a romantic tutu. Scrunchie included



THE PROMISE - X166A - BLACK • X166B- BABY BLUE

Lace over silver mystique pinch front bodysuit and peplum on separate waistband over romantic tutu. Scrunchie included.



VOYAGES - X167A - PURPLE • X167B - RED

Velvet bodysuit with roushed insert and puff sleeve. Two layer skirt on gold waistband is beautifully trimmed. Scrunchie included.



MIDNIGHT - X168A - PINK • X168B - WHITE • X168C - RED

Black lace over mystique sweetheart turtleneck bodysuit and romantic tutu on separate waistband. Scrunchie included.



ADAGIO - X169A - FOREST • X169B - BURGUNDY • X169C - NAVY

Velvet and lace empire bodysuit features a pinch front, cap sleeve bodice. Romantic tutu on a separate waistband. Hair scrunchie included.



CAST A SHADOW - X170A

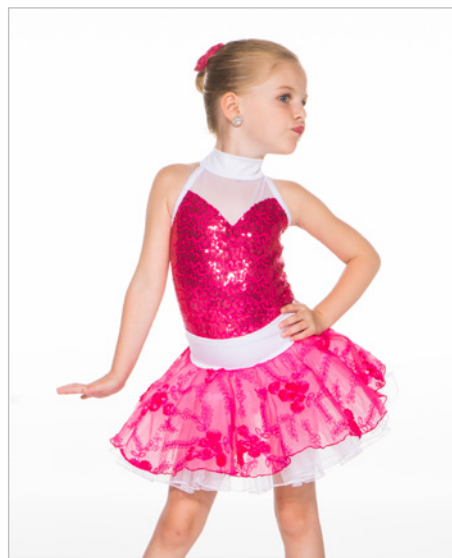
Silver grey sequin lace over lycra pinch front bodysuit with romantic tutu on separate waistband.



EVERMORE - X171A

Taupe crushed velvet turtleneck bodysuit with contemporary tutu of textured mesh over organdy.

These great designs are still available in our e-shop or in person only. When the fabric or stock is gone...so are they!



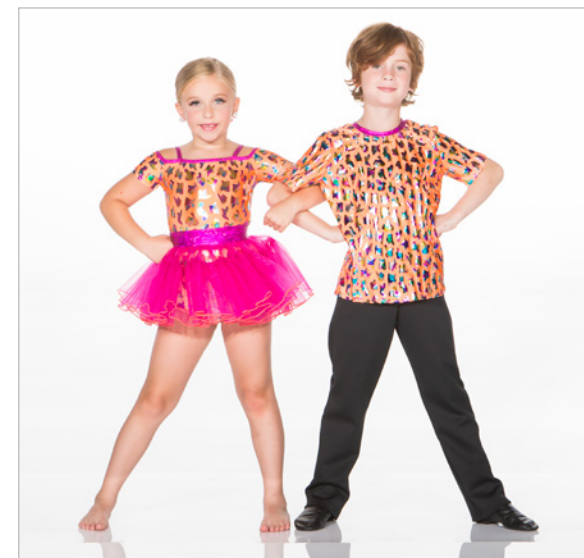
MATERIAL GIRL
XLQ1



HAPPY
XLQ2



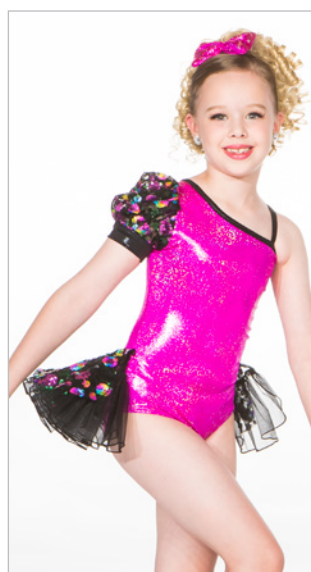
CRAZY FOR DAISY
XLQ3 - GIRL • XLQ4 - BOY



MAKE SOME NOISE
XLQ5 - GIRL • XLQ6- BOY



ALOHA
XLQ7



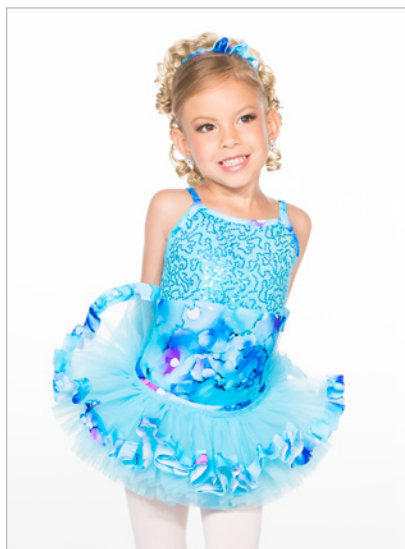
MAMBO #5
XLQ8



CRUSH
XLQ9 - BOY • XLQ10 - GIRL



HAPPY BIRTHDAY!
XLQ11 - TURQUOISE • XLQ12 - PURPLE • XLQ13 - FUCHSIA



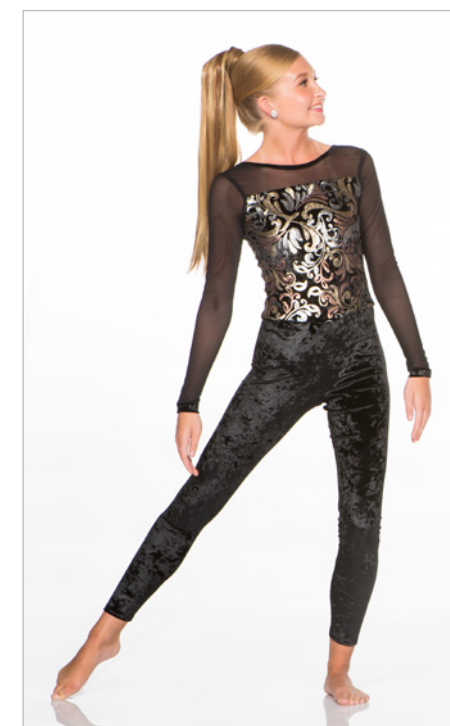
FIVE LITTLE STARFISH
XLQ14



STEPPIN' OUT
XLQ15



BLOOM IN THE SHADOWS
XLQ16



REGENCY
XLQ17



AWAKENINGS
XLQ18 - DRESS
XLQ19 - BACKSKIRT



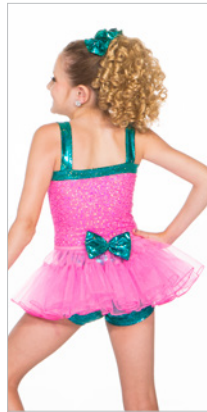
CINEMA
XLQ20 - BROWN • XLQ21 - BLACK



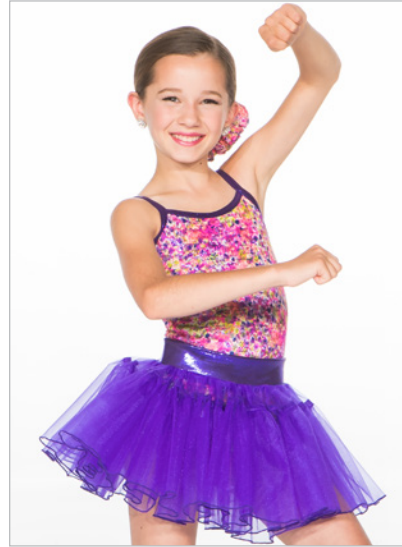
PEPPERMINT TWIST
XLQ22



HEY YA! — XLQ23 - TURQUOISE • XLQ24 - PURPLE
• XLQ25 - EMERALD • XLQ26 - YELLOW



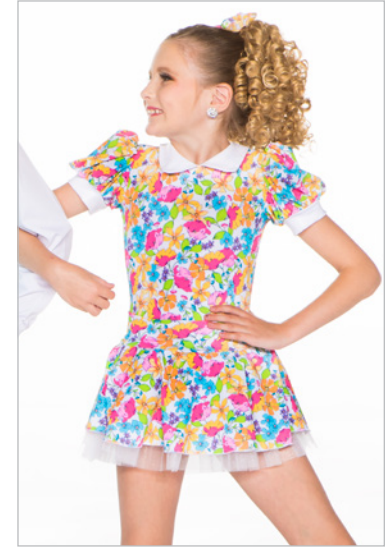
WANNA DANCE
XLQ27



FEELING FINE
XLQ28



BOSS
XLQ29 - GIRL • XLQ30 - BOY



SATURDAY IN THE PARK
XLQ31



SUNSHINE
XLQ32



LET'S GET LOUD
XLQ33



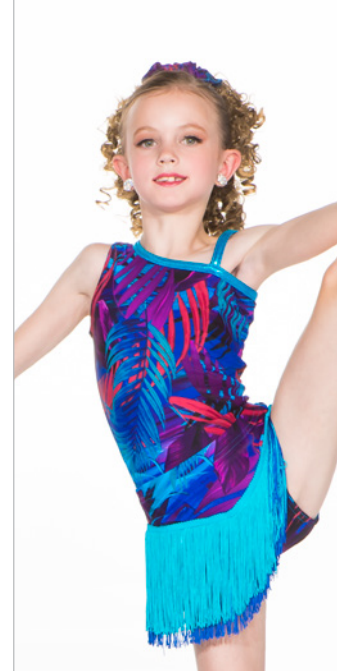
PLAYGROUND
XLQ34 - BLUE • XLQ35 - PINK • XLQ36 - LILAC • XLQ37 - BOY/BLUE



TAPESTRY
XLQ38



I'LL BE THERE
XLQ39



SHAKE THE GROUND
XLQ40



LIMITED QUANTITIES

IT'S A GIRL THING
XLQ41 - BLUE •
XLQ42 - BLUSH



COLD-BLOODED
XLQ43 - BOY/UNISEX • XLQ44 - GIRL



GIRLZ
XLQ45 - TANK TOP VERSION • XLQ46 - BRA TOP VERSION



ORDERING INFO

Returns are not accepted,
except in the case of manufacturer defect.

**We cannot accept returns on unclaimed or extra costumes
once they have been shipped to you.**

Studios can order Express Collection Costumes two ways. They can be purchased through our online shopping portal. Please let us know if you need a login. You can also submit orders using our two part order form available on our website **www.costumesbyJazzamatazz.com**. Follow the easy steps to fill out online and submit from the website. Order forms can also be printed out, scanned and emailed. As always, Jazzamatazz sells only to registered dance schools and programs.

QUANTITIES are limited to fabrics available. We will indicate in our inventory list whether back orders are available on each item or not. Back-ordered items require a minimum order of 3 per colour per style. Items that are in stock have no minimums attached.

THE EARLY ORDER DISCOUNTS from Performance Collection DO NOT apply to the Express Collection as it is already a value priced collection.

EXCHANGES will be accommodated where possible but we cannot guarantee availability. Costumes must be unworn, unaltered and not have names written on inside garment tags to be eligible for exchange. Costumes must be exchanged in sellable condition.

ORDERS MUST BE PAID IN FULL PRIOR TO SHIPPING

Orders may be paid for by Visa, Mastercard, E-Transfer or Debit in the case of in-person shopping.

Our team is here to help! If you have any questions at all, please give us a call at 905-542-0605 or email us at **costumesbyjazzamatazz@gmail.com**, we would love to speak with you!

Your Made-in-Canada Solution

**Discover for yourself why the Express Collection
is the Canadian Dance Teacher's
Favourite Resource!**

Quantities are limited to fabric available

Check **www.costumesbyJazzamatazz.com**
for the most current inventory levels!

★ Online Shopping ★

**Shoppings carts will be updated with
exciting new styles and a selection of
discontinued costumes offered at
50% off**

Same great Jazzamatazz quality,
designed to solve budget and time constraints.

**Studio owners can email us at
costumesbyjazzamatazz@gmail.com
for your price list.**

JAZZAMATAZZ
The Express Collection

4 -2330 Southfield Road, Mississauga, Ontario L5N 2W8
905-542-0605

CHILDREN'S SIZES - GIRL/BOY/UNISEX	Bust	Waist	Hip	Girth	Outseam
3-3X	19-21	18-21	20-22	34-36	22
4-5	21-23	20-21	22-24	36-39	24
6-6X	23-24	21-22	23-25	40-42	26
7-8	24-25	22-23	25-27	43-45	30
8-10	25-26	23-24	27-29	45-47	33
10-12	26-27	24-25	29-30	47-49	35
12-14	27-29	25-26	30-32	49-52	37
14-16	29-31	26-27	32-34	52-54	39
CHILDREN'S PLUS SIZES - GIRL/BOY/UNISEX					
7-8 PLUS	26.5-28	26.5-28	29-30	46-48	30
8-10 PLUS	27.5-29	27.5-29	30-32	49-51	33
10-12 PLUS	28.5-30	28.5-30	32-34	51-54	35
12-14 PLUS	29.5-32	29.5-30	34-36	54-57	37
14-16 PLUS	31.5-34	31.5-34	36-38	57-60	39
16-18 PLUS	34-37	34-37	38-41	60-63	40
ADULT SIZES- WOMEN/MEN/ UNISEX					
X-Small	31-32.5	24-26	32-34	54-55	39
Small	32-34.5	25-28	34-36	55-58	40
Medium	35-37.5	27-30	36-39	58-61	41
Large	38-41	30-33	39-42	61-64	42
X-Large	41-43	33-36	42-45	64-66	43
XX-Large	43-46	36-40	45-48	66-69	43

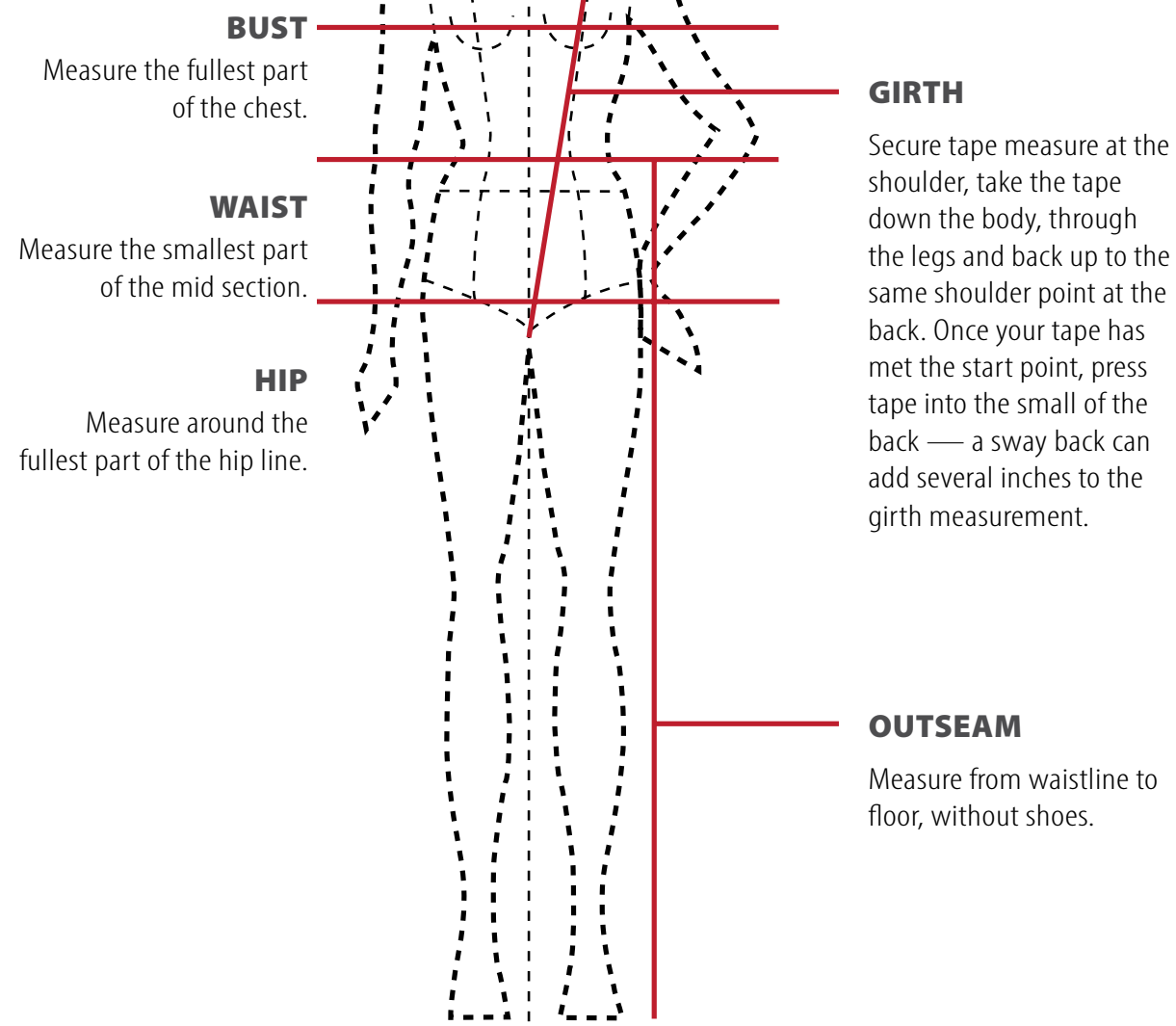
Please order the size that includes the majority of your dancer's measurements.

MEASURING TIPS

Always measure as close to the body as you can.
Your dancer should be in a bodysuit or other close fitting dancewear.

A WORD ABOUT SIZING

NEVER USE THE GIRTH MEASUREMENT ALONE TO SIZE YOUR DANCER.



JAZZAMATAZZ

The Express Collection



Proudly made in
Canada for 36 years



4 -2330 Southfield Road,
Mississauga, Ontario L5N 2W8

905-542-0605