



# JAZZAMATAZZ

THE SPOTLIGHT COLLECTION

2026

# THE SPOTLIGHT COLLECTION

The Spotlight Collection is a group of Performance style costumes, with the added bonus of being in stock! They feature the same level of detail, the same extra bounce in the crinolines but with no minimums and no back orders. The Spotlight Collection is made in our Mississauga facility, in accordance with our **100% MADE IN CANADA** commitment!

Whether these costumes step on stage as they are or serve as a canvas for your creative embellishment, we think you will love the convenience and quality of the Spotlight Collection for groups, solos, duets and trios.

The Spotlight Collection costumes are available in person as well as in shopping carts. There are no back orders available on this collection but if they haven't been produced yet, you can pre-order exactly the sizes you need, using our order form. Check the Current Inventory spreadsheet on our website to see the status of the group you love! Great designs that won't be around forever. Once they are gone, they are gone. .

We invite you to step into The Spotlight!



Proudly made in Canada  
for 36 years



CRAZY LITTLE  
THING CALLED LOVE

SP3A

Red sequin bra top and high-waisted banded brief features a two toned tattered backskirt, a heart print hologram shrug and large bow on back, finished with a rhinestone heart buckle at waist.





## MERMAID PARTY

**SP4A - PURPLE**  
**SP4B - AQUA**

Bikertard with side cutouts, bouncy backskirt and flounces, all finished with a bow.





## CONGA

**SP5A**

Colour blocking in this pinch front bra top and high-waisted banded brief with sequin tulle ruffles. Bows on the top, waist and one for the hair finish this look to perfection.



## HAPPY TOGETHER

**SP6A - LIME**  
**SP6B - HOT PINK**  
**SP6C - YELLOW**  
**SP6D - TURQUOISE**

Dotted mesh over mystique bodysuit and skirt over super bouncy crinoline. Dotted mesh shrug finished with a bow. Hair bow included.





HIGHLIGHT REEL

**SP7A - FLO. PINK**  
**SP7B - FLO. GREEN**  
**SP7C - FLO. ORANGE**

Fluorescent textured lycra bibbed dress pops over black/white polka dot puff sleeve bodysuit with white collar, cuffs and full crinoline. Colour hair bow and large polka dot bow at back of waistband punctuate the personality.





## BETTER WHEN I'M DANCING

**SP8A - PINK**  
**SP8B - YELLOW**  
**SP8C - LILAC**

Low shed glitter flocked lycra bodysuit and skirt over a colourful bouncy crinoline is finished with a puff sleeve mystique shrug. Hair bow included.



**ME!** **SP9A**

Bubblegum and laser silver lycra in this zip back puff sleeve bodysuit and skirt bouncing over a super poufy crinoline, finished with bows at the waist and hair.



**WE'RE  
IN THE  
MONEY**

**SP9B - GIRL  
SP9C - BOY**

GIRL: Emerald and laser silver zip back puff sleeve bodysuit with attached backskirt over an emerald green bouncy back crinoline. Hair bow included.  
BOY: Matching vest and emerald mystique neck tie with black classic pant. Dress shirt not included.





## HEAVEN HOP

**SP10A - GIRL**  
**SP10B - BOY**

GIRL: Baby blue sequin, mystique and white mesh in this banded bodysuit with side cutouts and full sequin skirt, trimmed in marabou over a super bouncy crinoline. Finished with a sequin bow at waist and one for the hair.

BOY: Baby blue sequin vest and necktie with black classic pant. Dress shirt not included.





## SUGAR AND SPICE

**SP11A**

Sequin and mesh top with 3D flower lace puff sleeves and backskirt on a banded mystique brief and a bouncy back crinoline, all edged in pink, and finished with a bow. Hair bow included.



## BEACH PARTY

**SP12A - YELLOW**  
**SP12B - PINK**

Polka dot double spaghetti strap top and banded brief/backskirt over bouncy crinoline and all trimmed out in mystique and finished with a bow. Hair bow included.





## STILL SWEET

### SP13A - GIRL SP13B - BOY

GIRL: Lightly glittered lycra sweetheart puff sleeve crop top, anded brief and full skirt over bouncy crinoline. Finished with a bow at the waist and in the hair.

BOY: Lightly glittered lycra and mystique suit jacket, print bow tie and classic pant in white. Dress shirt not included.





## X'S AND OH'S

**SP14A - GIRL/BLACK**  
**SP14B - GIRL/RED**  
**SP 14C - GIRL/PURPLE**  
**SP14D - GIRL/FUCHSIA**  
**SP14E - BOY**

GIRLS: Lightly glittered lycra bodice and top peplum has mesh shoulders and sleeves, mystique booty shorts and a double structured peplum in the print and mystique.

BOY: Lightly glittered lycra and mystique tuxedo jacket, mystique neck tie and classic pant in black. Dress shirt not included.





## BREAKOUT

**SP15A**

Striped bodice attached to fluorescent orange lined mystique shorts with suspenders and backskirt over a bouncy backskirt edged in black. Bow at waist and scrunchie for hair add the finishing touches.



## STARGAZING

**SP16A - PINK**  
**SP16B - BLUE**

Hologram print and black mesh in this 3/4 sleeve top and high waisted banded brief with double mesh backskirt attached.





## BAD BLOOD

**SP17A - PINK**  
**SP17B - BLUE**

Black mesh, mystique and hologram print in this banded bodysuit with two-toned tattered backskirt attached.



## KARMA

**SP18A - TURQUOISE**  
**SP18B - PURPLE**

Sequin and lycra double strap bra top and banded brief with black and colour fringe, finished with a rhinestone buckle.





FEARLESS

SP19A

Red/black lightly glittered print and black mystique in this double strap bra top and high waisted banded brief with 3 rows of ruffles on seat.





## STAR OF THE SHOW

**SP20A - PURPLE**  
**SP20B - WHITE**  
**SP20C - RED**

Black sequin bra top and banded brief, dotted mesh and mystique collared shrug with cuff and button detailing. The backskirt over crinoline has a bow to finish the story.







## CAN'T STOP

**SP21A - 1 PC**  
**SP21B - FUCHSIA 2 PC**  
**SP21C - PURPLE 2 PC**  
**SP21D - TEAL 2 PC**

ONE PIECE: Mystique long sleeve bodice attached to printed leatherette high-waisted booty shorts and suspenders, finished with small bows on front and large bow on back.  
TWO-PIECE: Mystique long sleeve bra top and high-waisted printed leatherette booty shorts and suspenders, finished with small bows on front and large bow on back.





## IN CONTROL

**SP22A**

Zip front bodice with side cutouts, attached to mystique mock jeans.



POP STAR

SP23A

Metallic print turtleneck cutaway ladder back bodice attached to mystique jeans with detail stitching, belt loops and back pockets.





## SALSA **SP24A**

Red mesh cross over top attached to a lycra pinch front bra top, paired with a banded brief with two rows of contrast fringe, all finished with a rhinestone buckle.



## FEELING GOOD **SP24B**

Diamond mesh over mystique bikertard, trimmed in mystique and two rows of fringe.



THOROUGHLY  
MODERN MILLIE

SP25A

Sequin and metallic mesh bodice with mystique collar and french cuff has a modest keyhole back and attached to silver booty shorts and 2 layers of 12" white fringe.





## QUEEN BEE

**SP26A - PURPLE**  
**SP26B - RED**  
**SP26C - GOLD**

Mock leather and mystique lined lace zip back bodysuit with banded legline features lace ruffle detail.



COUNTDOWN

**SP27A - PLUM**  
**SP27B - WHITE**

Zip front bodice with side cutouts, attached to a mystique banded brief.





## GASOLINE RAINBOWS

**SP28A - GOLD**  
**SP28B - SILVER**

Oilslick lycra and mesh in this sweetheart halter bra top and high-waisted banded brief with double mesh backskirt .



## CRYING IN THE CLUB

**SP29A - SILVER**  
**SP29B - GOLD**

Oilslick lycra long sleeve, off shoulder bra top and high-waisted banded brief.





## RULE THE SCHOOL

**SP30A**

Metallic plaid, mesh and mystique in this zip back, collared bodice with side cutouts, attached to mystique leggings.



## WELCOME TO THE JUNGLE

**SP31A - SNAKE**  
**SP31B - GIRAFFE**  
**SP31C - LEOPARD**

Animal print and mystique in these zip front bodices with side cutouts, attached to mystique leggings.





## ELECTRIC

**SP32A - TURQUOISE**  
**SP32B - RED**

Mystique print bodice with mesh shoulders and sleeves attached to a high waisted mystique banded brief.



## HIGH VELOCITY **SP33A**

Multi-colour sequin on black lycra pairs with black mesh and leatherette in this high-waisted banded bodysuit.





## RAY OF LIGHT

**SP34A**

Print and mesh bodice with side cutouts, banding in gold hologram, attached to gold hologram leggings.



POWER OF PINK

SP35A

Bright pink lace and mystique in this bikertard with side detail and separate mystique bra top included.





IMAGINE

SP36A

Colourful hologram print and coordinating velvet bikertard with mesh side detail.



NO REGRETS

SP37A

Multi colour sequin on teal lycra in this turtleneck banded bodysuit with cutaway back detail.





## KEYS OF LIFE

**SP38A - BLACK**  
**SP38B - WHITE**

Crushed velvet and mesh in this turtleneck banded bodysuit with modest keyhole opening.



DEFYING GRAVITY

SP39A

Print and forest mesh/lycra combination in this banded bodysuit with side detail.





## ALL TOO WELL

**SP40A - TAUPE**  
**SP40B - BURGUNDY**

Black lace over mystique in an asymmetrical bodysuit with banded legline and pinch front bra top.



**COLLIDE**

- SP41A - FOREST**
- SP41B - BROWN**
- SP41C - EGGPLANT**
- SP41D - NAVY**
- SP41E - GREY**

Tye dye mesh and lycra in this bodysuit that features a zip back and fully lined/banded brief.





## ALL OF ME

**SP42A - GREY**  
**SP42B - TEAL**  
**SP42C - PLUM**  
**SP42D - BLUSH**

Elegant lace over mystique bodysuit with lace shoulders and sleeves has banded legline.



ON MY OWN

**SP43A**

Lace bodice attached to metallic jersey skirt and lycra banded brief has separate metallic jersey bra top included.





## PARADISE

**SP44A**

Tropical mesh with gold overwash dress features slits to the waist on both sides and a sage sweetheart bodysuit with banded legline attached.



AUTUMN

SP45A

Tye dye slinky, olive lycra and mesh banded leg bodysuit and circle skirt on a high waistband.





## CHASING RAINBOWS

**SP46A - GOLD**  
**SP46B - FUCHSIA**

Mystique double strap bra top and banded brief with softly metallic striped skirt, slit to the waist on both sides on a high waistband.



# BREATHING UNDERWATER

**SP47A - ROYAL**  
**SP47B - PINK**

Soft printed mesh dress attached to lycra bodysuit features a cutaway ladder back detailing and banded legline.





## ANGELS AMONG US **SP48A**

White/gold overwash lycra bodysuit with lace shoulders, back and short backskirt.



RISE UP

- SP49A - PURPLE
- SP49B - ORANGE
- SP49C - FUCHSIA

Tye dye mesh and lycra in this bodysuit with 2 layer short backskirt.





## DAYBREAK

**SP50A - TURQUOISE**  
**SP50B - WHITE**  
**SP50C - FUCHSIA**  
**SP50D - EMERALD**  
**SP50E - PURPLE**

Lycra and sequin lace sweetheart dress with mid-thigh skirt has banded brief attached.



## EVERY BREATH YOU TAKE

**SP51A - TEAL**  
**SP51B - EGGPLANT**  
**SP51C - WHITE**  
**SP51D- NAVY**  
**SP51E - BLACK**  
**SP51F - BURGUNDY**

Lycra and sequin lace sweetheart dress with knee length skirt has banded brief attached.





## FOREVER AND A DAY

**SP52A - FOREST**  
**SP52B - NAVY**  
**SP52C - BLACK**  
**SP52D - RED**  
**SP52E - WHITE**

Lycra pinch front bra top and fully lined high-waisted brief.  
Perfect canvas for all your embellishments!



## HOLDING ON

- SP53A - BLACK**
- SP53B - BLUSH**
- SP53C - NAVY**
- SP53D - BURGUNDY**
- SP53E - CHARCOAL**
- SP53F - FOREST**

Bodysuit with fully lined mesh insert, lined and banded brief and modest keyhole back.





## WITH GLOWING HEARTS

**SP54A - WHITE**  
**SP54B - RED**

Beautiful lace zip back dress has beige lycra lined bodice, front and back with coordinating attached brief and knee length skirt. Scrunchie included.



ALEJANDRO

**SP55A - CHARCOAL**  
**SP55B - BURGUNDY**  
**SP55C - RED**  
**SP55D - WHITE**

Zip back lace banded bikertard with attached mystique spaghetti strap bikertard.





**SP56A**

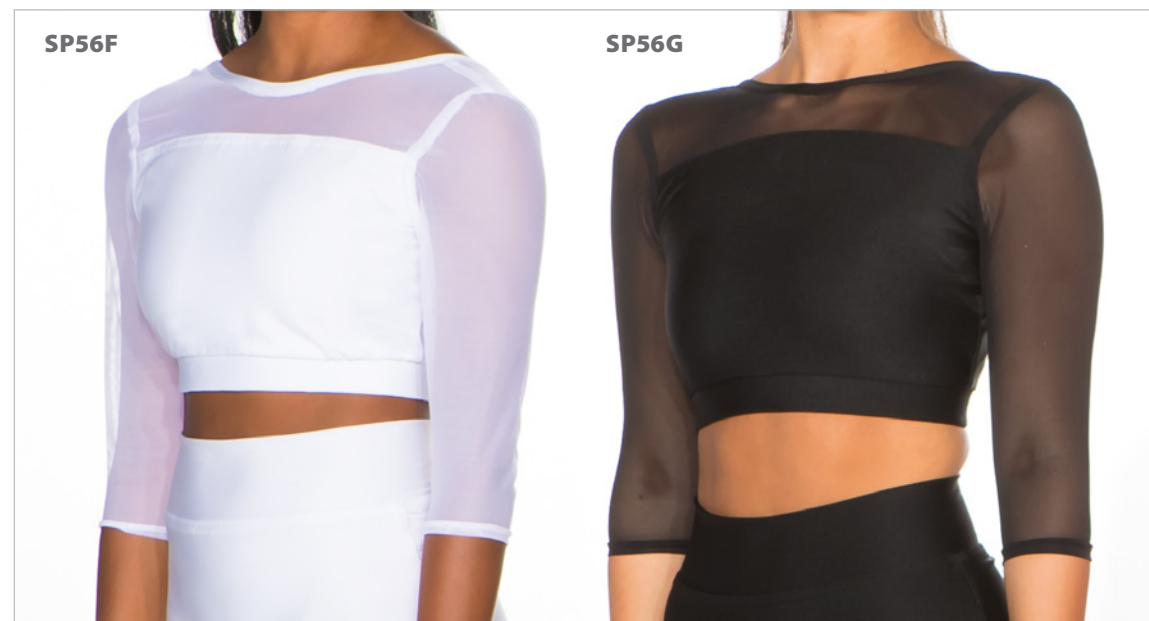


**SP56B**

**SP56C**

**SP56D**

**SP56E**



**SP56F**

**SP56G**

## SEPARATES



**SP56A** - Leatherette mock jeans.

Textured knee length circle skirts - semi sheer

**SP56B - TURQUOISE**

**SP56C - TURQUOISE**

**SP56D - RED**

**SP56E - PURPLE**

Lycra top with mesh shoulders and 3/4 sleeve.

**SP56F - WHITE MESH YOKE TOP**

**SP56G - BLACK MESH YOKE TOP**



## IT'S A GUY THING

**SP57A - SILVER**  
**SP57B - GOLD**  
**SP57C - RED**  
**SP57D - BLACK**

**SP57E - CLASSIC PANT**

Sequin vests

Classic pant with stretch waist. Black only.





# LAST CALL

## MY GIRL

SLQ1

Heart print puff sleeve collared crop top and skirt bouncing over a lilac glitter crinoline, all finished with a rhinestone heart buckle. Banded brief included.



## ITTY BITTY PRETTY ONE

SLQ2

Baby pink sequin sweetheart top with pink and black lightly sparkled skirt over a bouncy black crinoline. Pink mystique provides all the finishing touches. Hair bow and banded brief included.



RAZZLE DAZZLE

SLQ3

Dazzling sequin jersey and mesh top and HW banded bottoms with 3D lace backskirt over black crinoline, finished with a bow.



PAPARAZZI

SLQ4 - RED  
SLQ5 - TURQUOISE  
SLQ6 - FUCHSIA

Diamond mystique, mesh and mystique bodysuit with attached tattered two toned crinoline.





## CONFIDENT

SLQ7

Sequin, mesh and velvet banded leg bodysuit with attached backskirt and crinoline.



## CELL BLOCK TANGO

SLQ8 - BLACK  
SLQ9 - WHITE

Diamond mesh and mystique off shoulder pinch front bra top and HW banded brief.



FLY AWAY

SLQ10

Glitter velvet and mesh bodice attached to velvet leggings.



WIDE AWAKE

SLQ11

Metallic print and mesh attached to mystique leggings.





## MERCY ME

**SLQ12 - BEIGE**  
**SLQ13 - BLACK**

Multi colour sequin on beige or black background in this double spaghetti strap bra top and banded brief.



## YESTERDAY

**SLQ14**

Tye dye long skirt, slit on both sides and crossover top with attached eggplant lycra pinch front bra top. Lined and banded brief included.



FOR TODAY

SLQ15

Sequin, mesh and lycra in this bodysuit with banded legline, side cutouts and a 2 layer short backskirt.



WHAT I WAS MADE FOR

SLQ16

Eggplant sequin bra top with cutaway back paired with mesh leggings and attached banded brief.



## ORDERING INFORMATION

Spotlight designs are made in small batches of 50-250, so quantities are limited to what is in stock once they have been made. If a design is on pre-order status, you can order whatever sizes and quantities you need, so ordering early is definitely a great idea!

New groups are being added to stock regularly...check our website for Current Inventory levels. There are no minimums, so this is a great collection for solos and duets as well as for groups.

**We will accommodate size exchanges where available when requested in a timely manner.  
Costumes must not be worn or altered in any way.**

**We do not accept returns on costumes  
once they have been shipped.**

---

Please understand that all costume companies fit differently.  
**Do use the Jazzamatazz sizing guide to ensure a Jazzamatazz fit.**  
We offer 20 sizes in all our costumes to ensure a great fit.

### **A few tips for a great fit...**

**Lycra bodysuits** will generally accommodate a few extra inches and should not be sized up.

**Plus sizes** are designed for dancers who have round proportions, not long girths.

---

**Balances are due prior to shipping or pick up.**

---

### **We charge a flat fee for shipping.**

We charge 3% of your order (or a \$25 minimum) in Ontario

We charge 4% of your order (or a \$35. Minimum) outside of Ontario.

Please allow 5-10 days for the transport of your order, depending on distance and conditions.

Orders shipping to a PO Box can only ship Canada Post.

There is no ship charge for studios who choose to pick up from our facility.

If you have any questions at all, please reach out to a team member.

We are always happy to help.

**costumesbyjazzamatazz@gmail.com    905-542-0605**

CHILDREN'S SIZES - GIRL / BOY / UNISEX	Bust	Waist	Hip	Girth	Outseam
3-3X	19-21	18-21	20-22	34-36	22
4-5	21-23	20-21	22-24	36-39	24
6-6X	23-24	21-22	23-25	40-42	26
7-8	24-25	22-23	25-27	43-45	30
8-10	25-26	23-24	27-29	45-47	33
10-12	26-27	24-25	29-30	47-49	35
12-14	27-29	25-26	30-32	49-52	37
14-16	29-31	26-27	32-34	52-54	39

CHILDREN'S PLUS SIZES - GIRL / BOY / UNISEX	Bust	Waist	Hip	Girth	Outseam
7-8 PLUS	26.5-28	26.5-28	29-30	46-48	30
8-10 PLUS	27.5-29	27.5-29	30-32	49-51	33
10-12 PLUS	28.5-30	28.5-30	32-34	51-54	35
12-14 PLUS	29.5-32	29.5-30	34-36	54-57	37
14-16 PLUS	31.5-34	31.5-34	36-38	57-60	39
16-18 PLUS	34-37	34-37	38-41	60-63	40

ADULT SIZES- WOMEN / MEN / UNISEX	Bust	Waist	Hip	Girth	Outseam
X-Small	31-32.5	24-26	32-34	54-55	39
Small	32-34.5	25-28	34-36	55-58	40
Medium	35-37.5	27-30	36-39	58-61	41
Large	38-41	30-33	39-42	61-64	42
X-Large	41-43	33-36	42-45	64-66	43
XX-Large	43-46	36-40	45-48	66-69	43

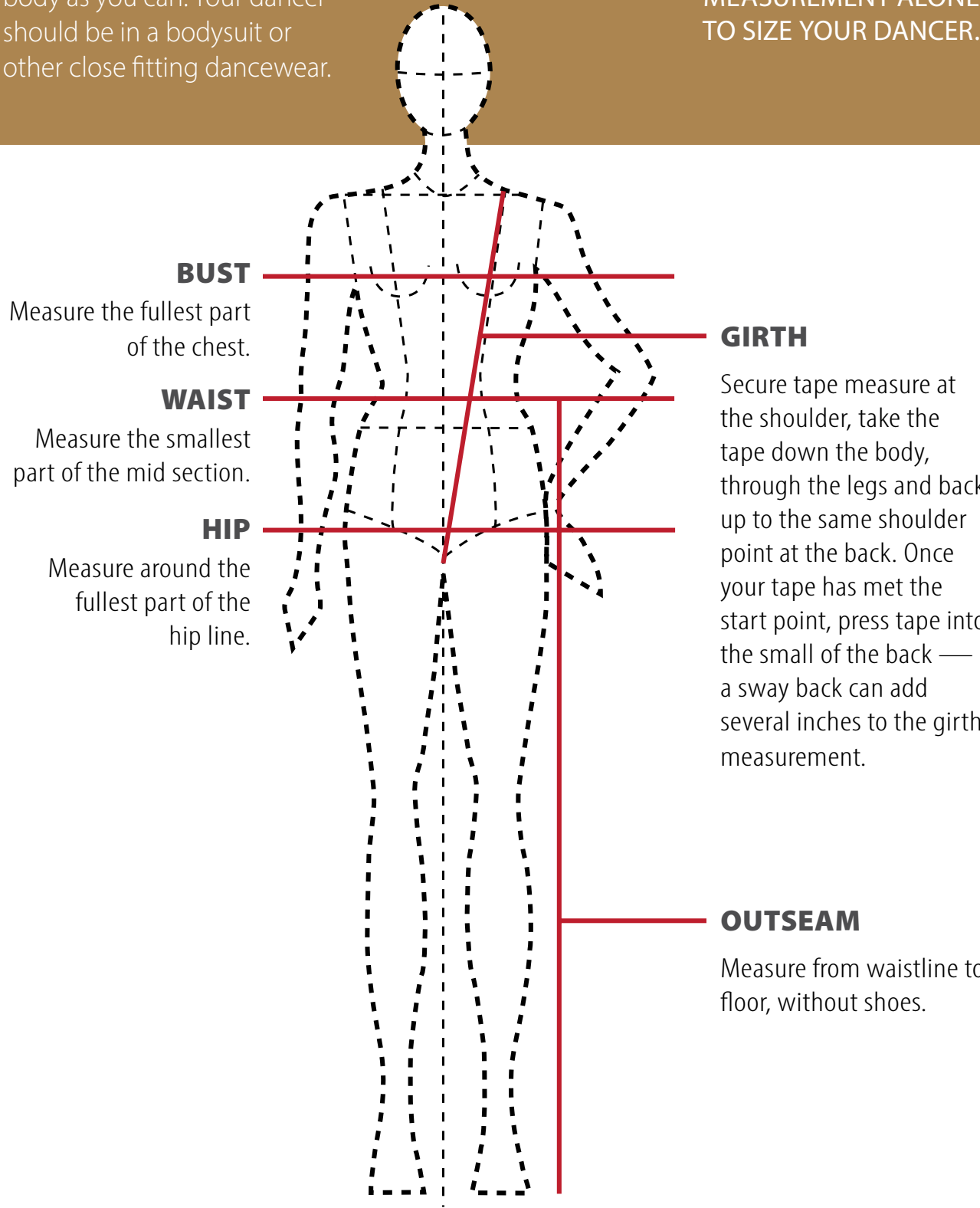
Please order the size that includes the majority of your dancer's measurements.

### MEASURING TIPS

Always measure as close to the body as you can. Your dancer should be in a bodysuit or other close fitting dancewear.

### A WORD ABOUT SIZING

NEVER USE THE GIRTH MEASUREMENT ALONE TO SIZE YOUR DANCER.





2026



**JAZZAMATAZZ**  
THE SPOTLIGHT COLLECTION

905-542-0605  
[www.costumesbyJazzamatazz.com](http://www.costumesbyJazzamatazz.com)